

Course: NR 303: Humans and the Environment

Description: Guest lecture for a 3 credit undergraduate course at North Carolina State University. Presented as part of the *Risk and Hazards* module.

Student Lecturer: Olivia Vilá, PhD student at North Carolina State University in the Department of Parks, Recreation, and Tourism Management

Email: ofvila@ncsu.edu

Session: Fall 2019

Due: October 29, 2019

SOCIAL DIMENSIONS OF NATURAL HAZARDS TRAINING MODULE ASSIGNMENT

Guest Lecture Overview:

As part of your Risk and Hazards module, you will have a guest speaker who will discuss the social dimensions of natural disasters. The learning outcomes for this guest lecture include the ability to:

- Define disaster, social vulnerability, and the four phases of emergency management.
- Explain why natural disasters are considered social phenomena.
- Demonstrate how social factors influence people's vulnerability to disasters.
- Identify ways that university research can help inform our understanding of diverse disaster experiences across and within different groups.

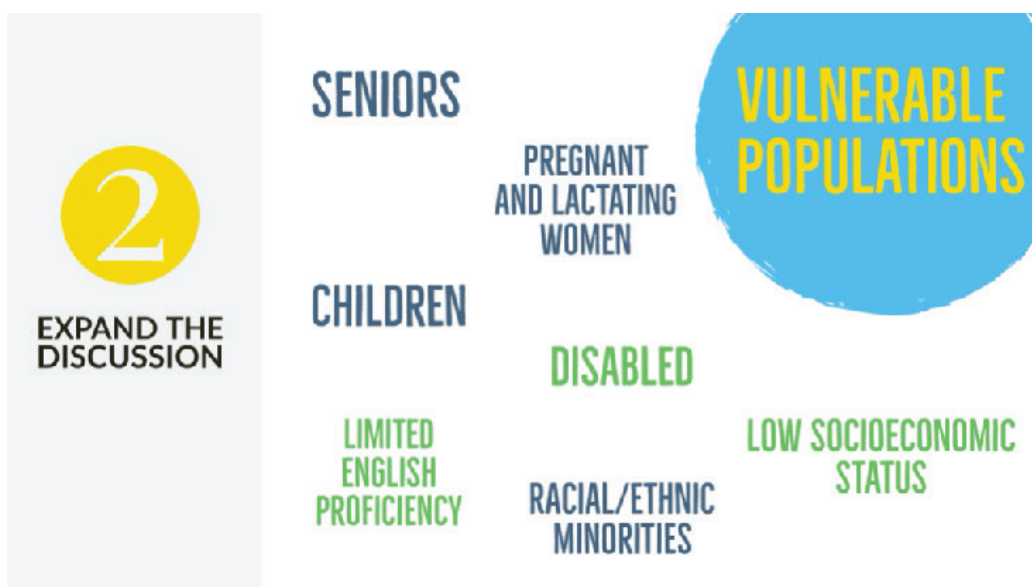
In preparation for this guest lecture, you will be required to complete three tasks, which are described in the following pages.



CONVERGE is a National Science Foundation funded initiative headquartered at the Natural Hazards Center at the University of Colorado Boulder. CONVERGE has recently began publishing training modules to train hazard and disaster researchers on wide range of topics. These trainings are particularly well-suited for students, providing an introduction to what it means to do ethically grounded, comprehensive, and rigorous extreme events research. For your first task, you will need to register with the CONVERGE project and complete the training module for Social Vulnerability and Disasters. Detailed instructions are below:

TASK 1 INSTRUCTIONS

1. Visit <https://converge.colorado.edu/>. Click the “RESOURCES” tab and then click on the “TRAINING MODULES” box.
2. To register, click “REGISTER HERE” and then select “Create an account”. You will then be prompted to fill out the registration form. Upon completion, you will immediately have access to the training modules.
3. For your task, complete the Social Vulnerability and Disasters training module. This includes taking the final quiz and getting at least 8 out of the 10 questions correct.
4. Download your Certificate of Completion for the training module and then upload the certificate to the class portal.



The second task involves expanding on what you learned from the CONVERGE Social Vulnerability and Disasters training. Detailed instructions are below:

TASK 2 INSTRUCTIONS

1. Reflect on what you learned about vulnerable populations as part of the CONVERGE training. Specifically, think about additional factors (that were or were not discussed in the training) that may make these populations vulnerable to disasters. Think about additional populations not discussed in the training that could also be vulnerable to the impacts of disasters.
2. On the classroom portal, make a post on the discussion board about these additional factors and populations you identified. Explain your reasoning.
3. Read other student’s posts and respond to at least one post. Include whether you agree or disagree with the post and support your position.
4. Be prepared to discuss your thoughts with the class.

3

PREPARE FOR CLASS ACTIVITY

ADDRESSING SOCIAL VULNERABILITIES



The third task involves preparing for an in-class group activity. Detailed instructions for how to prepare are below:

TASK 3 INSTRUCTIONS

1. Select two vulnerable populations that are of interest to you.
2. For each vulnerable population, brainstorm 3 strategies (one local, state, and federal level strategy) to help address the needs of that vulnerable population.
3. Write your ideas for each strategy on a piece of paper. Bring these to class and be prepared to refine these ideas with a small group of your classmates.

