



CONVERGE

NHERI 

CONVERGE advances social science, engineering, and interdisciplinary hazards and disaster research. We offer training opportunities for researchers and coordinate research teams in major disasters. We are committed to supporting ethical, rigorous, convergence research that seeks to solve pressing social and environmental challenges.



Research Networks

Our Extreme Events Research/Reconnaissance (EER) networks bring together natural hazards researchers across disciplinary boundaries to rapidly collect and share data.



Resources

Our training modules, extreme events research check sheets, and other resources accelerate the training and mentoring of a diverse next generation of researchers and practitioners.



Data

We partner with other shared-use facilities to advance mobile applications for social science and interdisciplinary data collection and to encourage the publication and sharing of data.

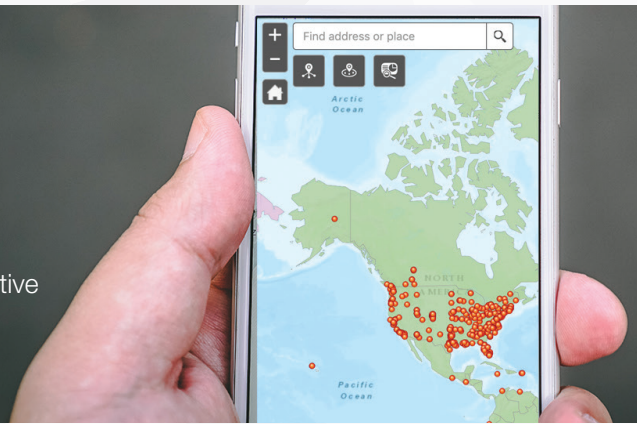


Communications

We host regular educational webinars and virtual forums to encourage better communication, coordination, and collaboration among researchers and multidisciplinary research teams.

SSEER Interactive Map

The Social Science Extreme Events Research—SSEER—network is a National Science Foundation-supported platform for social science hazards and disaster researchers. You can find SSEER members, their organizational affiliations, and their geographic location using our interactive map. See: converge.colorado.edu/research-networks/sseer



Join Us Online!

Learn More | Sign Up | Find Resources

converge.colorado.edu
converge.colorado.edu/signup



CONVERGE is a National Science Foundation-funded facility (Award #1841338) and is part of the Natural Hazards Engineering Research Infrastructure (NHERI). CONVERGE is headquartered at the Natural Hazards Center at the University of Colorado Boulder.

