



SSEER
SOCIAL SCIENCE
EXTREME EVENTS
RESEARCH

The Social Science Extreme Events Research—SSEER—network is a National Science Foundation-supported platform for social science hazards and disaster researchers. The mission of SSEER is to identify social science researchers and help them build connections—to one another, to interdisciplinary teams, and to communities affected by disaster and disaster risk. SSEER is designed to amplify and advance social science hazards and disaster research.



Social Sciences



The social sciences focus on the scientific study of society, social relationships, and policy. As disasters impact human populations and communities, social scientists have a decades-long history of studying the social drivers and human consequences of extreme events.



SSEER Census



Our SSEER team created a survey to identify members of the social science hazards and disaster research community and their respective areas of expertise. Since 2018, we've published an annual census report on the state of the social science research workforce.



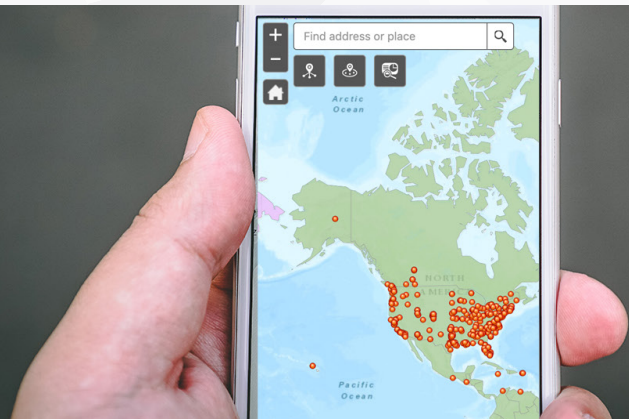
SSEER Publications



You can learn more about the SSEER network and contributions of the social science research community through downloading SSEER publications. These include journal articles, published datasets and research instruments, and research reports.

SSEER Interactive Map

The Social Science Extreme Events Research—SSEER—network is a National Science Foundation-supported platform for social science hazards and disaster researchers. You can find SSEER members, their organizational affiliations, and their geographic location using our interactive map.



[Learn More](#) | [Sign Up](#) | [Find Resources](#)

Join Us Online!

converge.colorado.edu/research-networks/sseer
converge.colorado.edu/signup
converge.colorado.edu/join-sseer



SSEER is a National Science Foundation-funded network (Award #1745611 and #1841338). SSEER is a component of the CONVERGE facility, which is headquartered at the Natural Hazards Center at the University of Colorado Boulder.

