



**NATURAL
HAZARDS
CENTER**



We envision a just and equitable world where knowledge is applied to ensure that humans live in harmony with nature.

Welcome to the **CONVERGE Virtual Forum –**

COVID-19 Working Groups for Public Health and Social Sciences Research

Friday, April 3, 2020
3:00 to 4:30 p.m. MDT

converge.colorado.edu/communications/virtual-forum/covid-19-pandemic-working-groups

*Please use the chat box if you have information or resources to share!
We will add your materials to the meeting notes.*



SSEER
SOCIAL SCIENCE
EXTREME EVENTS
RESEARCH



University of Colorado **Boulder**

NSF Award #1841338



Recording in Progress

*To ensure good sound quality for all participants, **please** ensure that your microphone is muted. Thank you!*

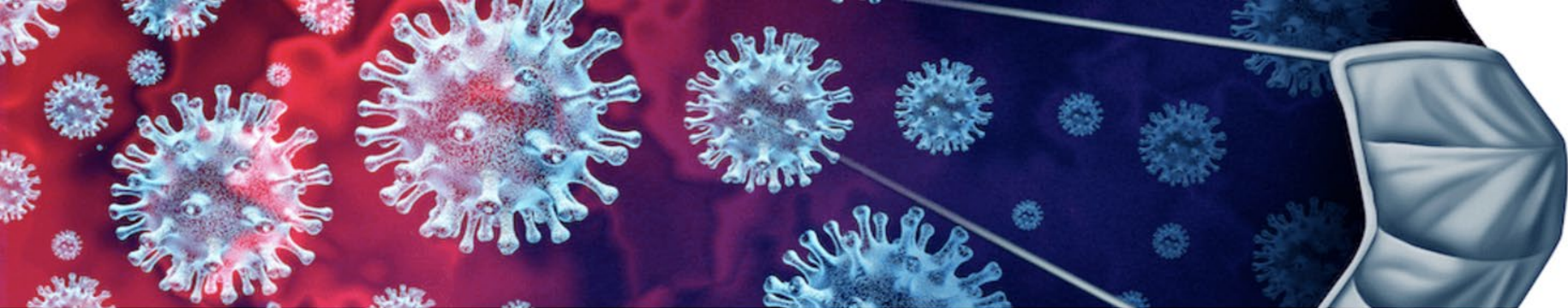
The captioned recording and presentation slides for this forum will be posted online at: converge.colorado.edu/communications/virtual-forum



SSEER
SOCIAL SCIENCE
EXTREME EVENTS
RESEARCH



NHERI 



COVID-19 Information

[Home](#)

[News](#)

[Resources](#)

[Research](#)

[Webinars/Forums](#)

[Funding Opportunities](#)

Coronavirus and COVID-19 Information

As we continue to deal with the ongoing impacts of coronavirus and the COVID-19 pandemic, we've been gathering resources that could be helpful to those seeking further information on the many widespread and varying impacts of the crisis.

The links in the sidebar will lead you to a selected news articles, related research, and resources that include toolkits, guides, information collections, and specialized response information.

We appreciate and recognize our community of experts. Please let us know about useful resources by emailing Jolie Breeden at jolie.breeden@colorado.edu.

To learn more, please visit:

hazards.colorado.edu/resources/covid-19



SSEER
SOCIAL SCIENCE
EXTREME EVENTS
RESEARCH



NHERI 

COVID-19 Global Research Registry for Public Health and Social Sciences

The COVID-19 pandemic underscores the urgent need for coordination, collaboration, and information-sharing among researchers worldwide. We hope those who are studying the human and societal impacts of this crisis will join this effort to build a global registry for public health and social science research.

Researchers are invited to [register their COVID-19-related project here](#). Registered projects should be focused on topics related to the social and behavioral consequences, policy responses, educational and economic impacts, and public health implications of COVID-19. The form takes approximately **10 minutes** to complete. The form is currently available in English, [French](#), [Spanish](#), and [Mandarin Chinese](#).



Sharing your information will help:

- Highlight novel public health and social science research initiated in response to COVID-19
- Expand opportunities for research collaboration and reduce duplication of effort
- Identify unmet research needs
- Create possibilities to [share and publish](#) research instruments, data collection and ethics protocols, and data
- Set a comprehensive social science research agenda

To learn more, please visit:

converge.colorado.edu/resources/covid-19/public-health-social-sciences-registry



SSEER
SOCIAL SCIENCE
EXTREME EVENTS
RESEARCH



NHERI The logo for NHERI (National Health and Environmental Research Institute), featuring a stylized 'N' and 'H' in blue and red.

Registry Available in Multiple Languages

Registre mondial de la recherche sur la COVID-19 Pour la
santé publique et les sciences sociales

La pandémie de COVID-19 souligne la nécessité urgente de coordonner, collaborer et partager à travers le monde. Nous espérons que ceux qui étudient les impacts humains et sociétaux de la pandémie rejoindront le registre mondial de la recherche en santé publique et en sciences sociales.

Les chercheurs sont invités à [enregistrer leur projet lié à la COVID-19 ici](#). Les projets enregistres concernent des questions sociales et comportementales, aux réponses politiques, aux impacts éducatifs et économiques de la COVID-19. Ce formulaire ne prend qu'une dizaine de minutes à remplir. Il est disponible

Le partage de vos informations va aider à :

- Réaliser les nouvelles recherches en santé publique et en sciences sociales qui se conc

collaboration en recherche et réduire la duplication des efforts de recherche.

[tager et de publier](#) des instruments de recherche, des prot

plet de recherche en sciences sociales

Intéressés par ce registre se trouvent des chercheurs qui travaillent pour des organisations à but non lucratif, des bailleurs de fonds et des chercheurs qui recherchent une expertise scientifique.



Registre mondial de la recherche sur la COVID-19 pour la santé
publique et les sciences sociales

Les informations contenues dans ce formulaire vont être partagées publiquement dans le format dans lequel elles sont soumises. Veuillez vérifier la cohérence, la clarté et la grammaire avant de soumettre. Merci !

French

Titre du projet :

--

COVID-19公共卫生科学和社会科学全球研究注册中心

COVID-19在全球范围内大面积流行。我们号召全球研究人员迅速行动起来，协调一致，共同合作，共享信息。全球的很多研究人员都正全力以赴，致力于减少COVID-19对人类毁灭性的打击。我们希望这些研究人员能加入这项工作，共同建立公共卫生科学和社会科学研究的全球注册数据系统。

我们邀请研究人员在此处注册您所从事的、与COVID-19相关的研究项目。这些研究项目应该致力于与COVID-19相关的如下领域：社会科学和行为科学、应急政策、教育和经济影响、和公共卫生策略。完成这个整个注册表格大约需要10分钟。该表格有[英语](#)、[西班牙语](#)、[法语](#)、和中文四种语言版本。

共享您的研究信息将有助于:

- 重点介绍针对COVID-19的新颖的公共卫生科学和社会科学研究策略；
- 扩大合作研究机会并减少重复研究活动；
- 确定未来的研究需求；
- 提高研究方法，数据采集，学术道德规范，以及数据分享的可能性；



COVID-19公共卫生和社会科学全球研究注册中心

该表格中包含的信息将以提交时的格式公开共享。提交前, 请仔细确认所有信息的一致性、清晰度、语法正确。谢谢合作!

Mandarin Chinese

研究项目名称:

研究项目网站:

请填写研究项目网站的网址或其他相关链接。例如：项目主持的个人资料页面。



COVID-19 Registro Global de Investigación para Salud Pública y Ciencias Sociales

El pandemia de COVID-19 subraya la urgente necesidad de coordinación, colaboración e intercambio de Información entre investigadores/as de todo el mundo. Esperamos que aquellos que estudian los impactos humanos y sociales de esta crisis se unan a este esfuerzo para construir un registro global de investigaciones de salud pública y ciencias sociales.

Investigadores/as están invitados a [registrar sus proyectos relacionados con COVID-19 aquí](#). Proyectos registrados deben enfocarse en temas relacionados con las consecuencias sociales y conductuales, las reacciones políticas, impactos educativos y económicos, y las implicaciones para la salud pública de COVID-19. El formulario se toma aproximadamente 10 minutos para completar. El formulario está disponible en este momento en español, [francés](#), [inglés](#), y [chino mandarín](#).



COVID-19 Registro Global de Investigación en Salud Publica y Ciencias Sociales

La información incluida en este formulario se compartirá públicamente en el formato en que se envíe. Verifique que todas las entradas sean consistentes, claras y sin errores gramaticales antes de enviarlas. ¡Gracias!

Spanish

Título de proyecto:

--

iniciada en respuesta a COVID-19
reducir la duplicación de esfuerzos

igativos, los datos, y los protocolos de ética y de la colección de



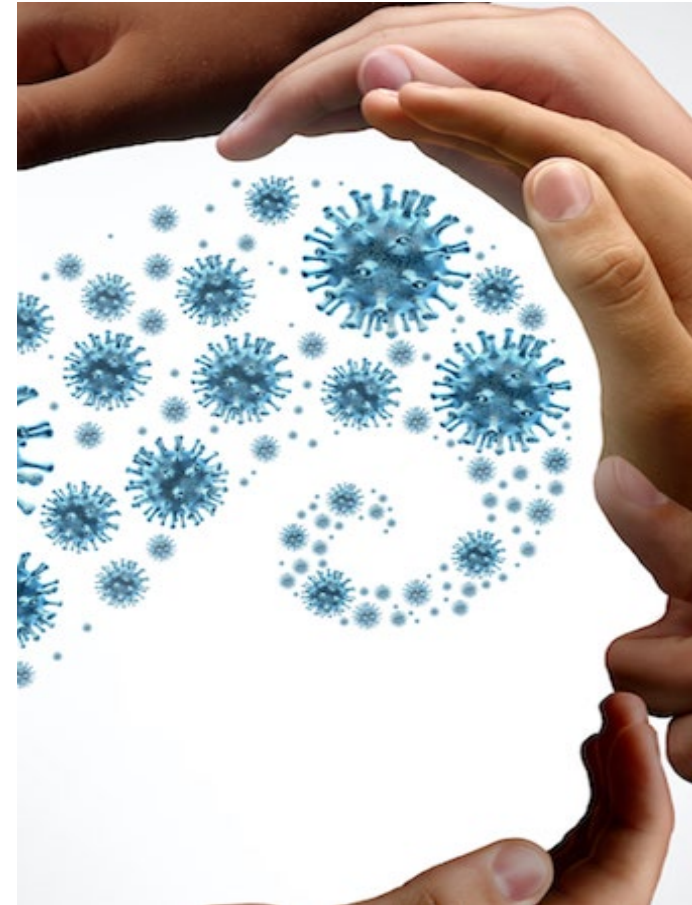
CONVERGE

NHERI

Update!

Special Call for Quick Response Grant Proposals: COVID-19

- On March 16, we released a special call for proposals to fund research that examines how COVID-19 is affecting potentially vulnerable or marginalized populations, healthcare workers and other frontline responders, various organizations, and communities.
- **56 research** proposals were submitted.
- We will be able to award approximately **15 research projects** of up to **\$3,000** each.
- The submitted proposals are under blind peer review and final determinations will be made by **April 16**.
- Abstracts of funded proposals will be posted here: hazards.colorado.edu/research/quick-response-report/funded





COVID-19 Working Groups

COVID-19 Working Groups for Public Health and Social Sciences Research

Based on the outpouring of interest from the research community and our mission to advance convergence science for the benefit of humanity, CONVERGE is offering **\$1,000 awards** to those who wish to launch COVID-19 Working Groups for Public Health and Social Sciences Research.

CONVERGE and the Social Science Extreme Events Research (SSEER) Network will fund up to **30 COVID-19 Working Groups** focused on issues and advancements in methods, ethics, and empirical topics.

Applications for Working Groups will be accepted between **April 4 and April 13, 2020**. *Please keep reading for program requirements and to access the application form.* The funding announcement for Working Groups will be made no later than **April 17, 2020**. Working Groups and their members will be featured on the CONVERGE website and through the SSEER network to highlight the activities and scientific leadership of the group.

Researchers who are interested in leading or joining a Working Group are encouraged to take part in our next [CONVERGE Virtual Forum](#) on **Friday, April 3, from 3:00 to 4:30 p.m. MDT**. During this forum, researchers will have the opportunity to share ideas for Working Groups while connecting with one another. We will also discuss the Working Group application requirements and begin the process of prioritizing areas of pressing societal and scientific concern.

"The best way to deal with the threat of unacceptable levels of burdensome research is for research teams to communicate and collaborate voluntarily—for example by sharing information on the topics they are studying and on the timing of their research activities, or by exploring ways to



To learn more, please visit:

converge.colorado.edu/resources/covid-19/working-groups



SSEER
SOCIAL SCIENCE
EXTREME EVENTS
RESEARCH



NHERI The logo for the National Health and Environmental Research Institute (NHERI), featuring a stylized 'N' and 'H' in blue and green.

COVID-19 Working Groups

Application Requirements

- Have a **clear focus area**
- Led by **public health OR social, behavioral, or economic sciences** researcher
 - Preference will be given to those who are [members of SSEER](#)
- **Have diverse teams**
 - at least **3 disciplines**; underrepresented groups, students
- Indicate one of the following **categories**:
 - **Actively Recruiting Working Group**
 - in early stages of formation and actively recruiting collaborators
 - **Open Working Group**
 - core Working Group is formed and is open to accepting new collaborators
 - **Closed Working Group**
 - Working Group is formed and not open to additional collaborators
- Provide brief **budget justification**
 - any research related expense



SSEER
SOCIAL SCIENCE
EXTREME EVENTS
RESEARCH



NHERI

COVID-19 Working Groups

Delivery Requirements

- A **one- to two-page** research agenda setting paper
- **Due** no later than **June 19, 2020**
- Should highlight:
 - key **ethical, methodological, or empirical gaps** that could be addressed by the broader research community
- Final **Research Agenda** will be **published** on the CONVERGE website converge.colorado.edu



SSEER
SOCIAL SCIENCE
EXTREME EVENTS
RESEARCH

CONVERGE

NHERI



COVID-19 Working Groups

A man in a blue checkered shirt is sitting at a desk, writing in a notebook with a pen. A laptop is open in the background. The text "Empirical Considerations" is overlaid in the center of the image.

Empirical Considerations

COVID-19 and Food Access, Availability, and Security

Lauren Clay, Health Services Administration Department, D'Youngville College and
New York University

lc4301@nyu.edu

Formed and Open

Social Ties, Mobility, and COVID-19 Spread Rates

Daniel Aldrich, Department of Political Science, Northeastern University

daniel.aldrich@gmail.com

Formed and Open

The Hyper-Local and Emergent Mutual-Aid Response to COVID-19

Robert Soden, Department of Computer Science, Columbia University

robert.soden@columbia.edu

In Formation and Actively Recruiting Members

Economic Resilience of Commercial Corridors in Majority-Minority Communities

Vanessa Leon, Urban Planning and Public Service, New York University and

Fallon Aidoo, Planning and Urban Studies, University of New Orleans

vanessa.leon@nyu.edu and faidoo@uno.edu

In Formation and Actively Recruiting Members

Technology and Policy

Patrick Roberts, RAND and Center for Public Administration and & Policy, Virginia Tech

proberts@rand.edu

In Formation and Actively Recruiting Members

Policy Perspectives, Impacts on Epidemiology, and COVID-19

Elizabeth Alvarez, Department of Health Research Methods, Evidence, and Impact,
McMaster University

alvare@mcmaster.ca

In Formation and Actively Recruiting Members

Redefining Family Life Under COVID-19

Jessica Pardee, Rochester Institute of Technology and
Dana Greene, Independent Disaster Researcher

iwpgss@rit.edu and dmgreene@umich.edu

Formed and Open

Mitigating Inequality in COVID-19: Incarceration, Segregation, and Poverty

Jon Zelner, Department of Epidemiology,
University of Michigan School of Public Health

jelner@umich.edu

In Formation and Actively Recruiting Members

Earthquakes, Volcanoes, Tsunamis, and Landslides in a Time of Pandemic

Sara K. McBride and Robert de Groot, U.S. Geological Survey

skmcbride@usgs.gov and rdegroot@usgs.gov

In Formation and Actively Recruiting Members

Extreme Weather Events in a Time of Pandemic

David Hondula, School of Geographical Sciences and Urban Planning,
Arizona State University

david.hondula@asu.edu

In Formation and Actively Recruiting Members

COVID-19 and Civil Liberties: Social Control in India and the United States

Kailash Gupta, Jaipur, India

kailashgupta@my.unt.edu


In Formation and Actively Recruiting Members

Stigma, Fear, Discrimination, and Backlash: Social Countermeasures and Emergency Management Actions

Aaida Mamuji, Disaster & Emergency Management, York University

amamuji@yorku.ca

In Formation and Actively Recruiting Members

A close-up photograph of a hand placing a white letter 'S' onto the word 'ETHICS' which is spelled out in white block letters on a sandy surface. The word 'ETHICS' is partially visible in the background, with the 'S' being the final letter being placed. The lighting is soft, creating gentle shadows on the sand.

Ethical Concerns *and* Methodological Advancements

The “Doing” of Research During COVID-19

Jack Rozdilsky, Disaster & Emergency Management, York University

rozdilsk@yorku.ca

Formed and Open

Social Vulnerability and System Inoperability Modeling Group

Pallab Mozumder, Department of Earth and Environment; Department of Economics,
Florida International University

mozumder@fiu.edu

Formed and Open

Data Publication and Research Instrument Sharing

NSF-Supported CONVERGE, RAPID, and DesignSafe

lori.peek@colorado.edu

Formed and Open

New Research on Advanced Integrated Security Methodology

Liu Chunlin, K&C Protective Technologies and

Rohan Gunaratna, Security Studies, RSIS

liu.chun.lin@kcpt.com.sg and isrkgunaratna@ntu.edu.sg

Formed and Open

Aligning Community Action: Bridging Needs and Research through Co-Design

Jeff Carney, School of Architecture, University of Florida

j.carney@ufl.edu

In Formation and Actively Recruiting Members

Global Researchers' Network on COVID-19

Louise Comfort, University of Pittsburgh
Graduate School of Public and International Affairs

comfort@gspia.pitt.edu

Formed and Open

Emergency Management Planning Team

Samantha Montano, Emergency Management & Disaster Science,
University of Nebraska Omaha

samanthamontano@gmail.com

In Formation and Actively Recruiting Members

COVID-19 Communication Ecologies: Interpersonal and Mediated Networks and Effects

Brian Houston, Department of Communication, University of Missouri

houstonjb@missouri.edu

In Formation and Actively Recruiting Members

Research on Research (RoR)

Liesel Ritchie, Oklahoma State University

Department of Sociology

liesel.ritchie@okstate.edu

Formed and Closed



A large crowd of people, seen from an aerial perspective, is arranged to form the geographical shape of the European continent. The individuals are densely packed within the landmass and more sparsely distributed in the surrounding areas, which represent the oceans. The people are wearing a variety of colorful clothing, creating a mosaic effect. The background is a plain, light gray surface.

Population Groups *and* Social Institutions

COVID-19 Gender and Intersectionality Research

Jane Henrici, George Washington University and World Bank-Haiti

jmhenrici@gmail.com

Actively Recruiting Members and In Formation

Disability and COVID-19

Laura Stough, Texas A&M University

Educational Psychology and Center on Disability and Development

lstough@tamu.edu

Formed and Open

Homelessness and COVID-19

Jamie Vickery, National Center for Atmospheric Research and
Natural Hazards Center, University of Colorado Boulder

jamie.vickery@colorado.edu

In Formation and Actively Recruiting Members

Children, Youth, Schools, and COVID-19

Marla Petal, Save the Children

Urban Resilience & School Safety

mpetal@imagins.com

In Formation and Actively Recruiting Members

Pandemic Im/mobilities

Christine Gibb, School of International Development and Global Studies,
University of Ottawa

chrisgibb@gmail.com

In Formation and Actively Recruiting Members

Indigenous and Earth Sciences and Practices in COVID-19

Heather Lazrus and Julie Maldonado, Rising Voices:
Climate Resilience through Indigenous and Earth Sciences

hlazrus@ucar.edu and jkmaldo@gmail.com

Formed and Open

Social Safety Net Organizations Serving Vulnerable Populations

Nnenia Campbell, Natural Hazards Center, University of Colorado Boulder

nnenia.campbell@colorado.edu

In Formation and Actively Recruiting Members

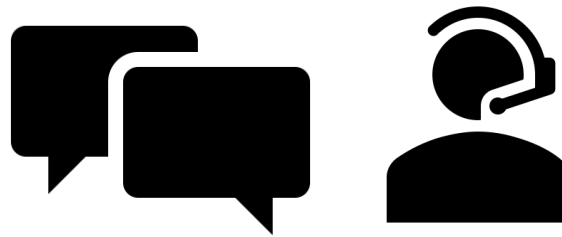
The background of the slide is a collage of various-sized question marks in different colors, including red, orange, yellow, green, blue, and pink. Some question marks are large and prominent, while others are smaller and more faded. They are scattered across the entire slide, creating a theme of inquiry and questions.

Questions about the Working Groups:

- Application Process?
- Funding?
- Deliverables?

Virtual Forum – COVID-19 Working Groups

If you have a suggestion for an additional COVID-19 Working Group, please enter your name and proposed idea in the Chat Box. I will try to call on you!



SSEER
SOCIAL SCIENCE
EXTREME EVENTS
RESEARCH



NHERI 

Sign up for CONVERGE resources and updates at:

converge.colorado.edu/signup

View the SSEER Map at:

converge.colorado.edu/research-networks/sseer/researchers-map

**The Virtual Forum recording, notes, and other resources will be
posted at:**

[converge.colorado.edu/communications/virtual-forum/covid-19-pandemic-
working-groups](https://converge.colorado.edu/communications/virtual-forum/covid-19-pandemic-working-groups)






SSEER
SOCIAL SCIENCE
EXTREME EVENTS
RESEARCH

CONVERGE

NHERI 

Resources



COVID-19 Information

Coronavirus and COVID-19 Information

As we continue to deal with the ongoing impacts of coronavirus and the COVID-19 pandemic, we've been gathering resources that could be helpful to those seeking further information on the many widespread and varying impacts of the crisis.

The links in the sidebar will lead you to a selected news articles, related research, and resources that include toolkits, guides, information collections, and specialized response information.


We appreciate and recognize our community of experts. Please let us know about useful resources by emailing Jolie Breeden at jolie.breeden@colorado.edu.

- [Home](#)
- [News](#)
- [Resources](#)
- [Research](#)
- [Webinars/Forums](#)
- [Funding Opportunities](#)


hazards.colorado.edu/resources/covid-19

Resources


Part of the mission of CONVERGE is to accelerate the training and mentoring of a diverse next generation of hazards and disaster researchers. To align with our mission, we are developing free, online training modules and a series of briefing sheets and check sheets to help guide extreme events research.



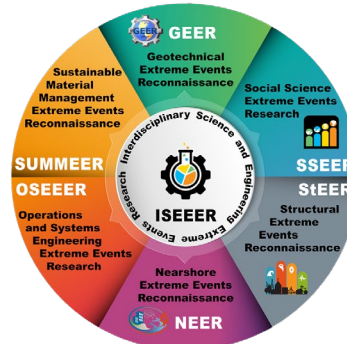
TRAINING MODULES



BRIEFING SHEETS



CHECK SHEETS



converge.colorado.edu/resources



Sign up for CONVERGE resources and updates:

converge.colorado.edu/signup

