

FEDERAL BRIEFING

Rapid Response Disaster Research: NSF-Supported Research Networks and Resources

Wednesday, May 20, 2020 | 1:00–3:00 p.m. EDT*

*1:00–2:00 p.m. – Federal Briefing w/ CONVERGE Leadership Corps

*2:00–3:00 p.m. – Follow-On Meeting w/ NSF Program Directors and Federal Partners

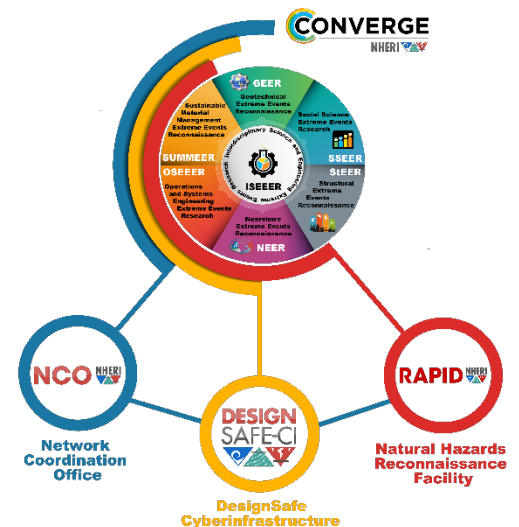
Registration Link: <https://cuboulder.zoom.us/meeting/register/tJMkcu2urT4iG9R0pUm4BdU7rY6lkPwO-afQ>

Registration is required. After registering, you will receive a confirmation email containing information about joining the meeting.

Are you interested in learning more about NSF-supported extreme events reconnaissance networks as well as NSF-funded facilities that promote disaster data collection and publication? If so, please join this briefing for NSF program directors and federal partners.

Background: The CONVERGE Leadership Corps encourages **ethical conduct** in research, **connects** and **coordinates** disciplinary communities, and advances **convergence research** in the hazards and disaster field.

The Leadership Corps includes the principal investigators for the NSF-funded [extreme events reconnaissance and research \(EER\) networks](#) and the [Natural Hazards Engineering Research Infrastructure \(NHERI\)](#) components that support reconnaissance efforts following natural hazards and other extreme events. Please join this briefing to learn more about potential **partnership opportunities**, research **training modules**, available **equipment** and **cyberinfrastructure**, and other **resources** to advance systematic **data collection** and **data publication**.



If you have questions about the Federal Briefing or the partners meeting to follow, please contact **Jacqueline Meszaros** at: jmeszaro@nsf.gov. For more information regarding the CONVERGE Leadership Corps, associated NHERI facilities, and research networks for geotechnical engineering, social sciences, structural engineering, nearshore research, operations and systems engineering, sustainable materials management, and interdisciplinary science, visit: <https://converge.colorado.edu/research-networks>.