

# A Brief Update on RApp ("RAPID app")

Joe Wartman

Director, RAPID Facility

CONVERGE Webinar

11 December 2020

NSF Award Number: CMMI 1611820



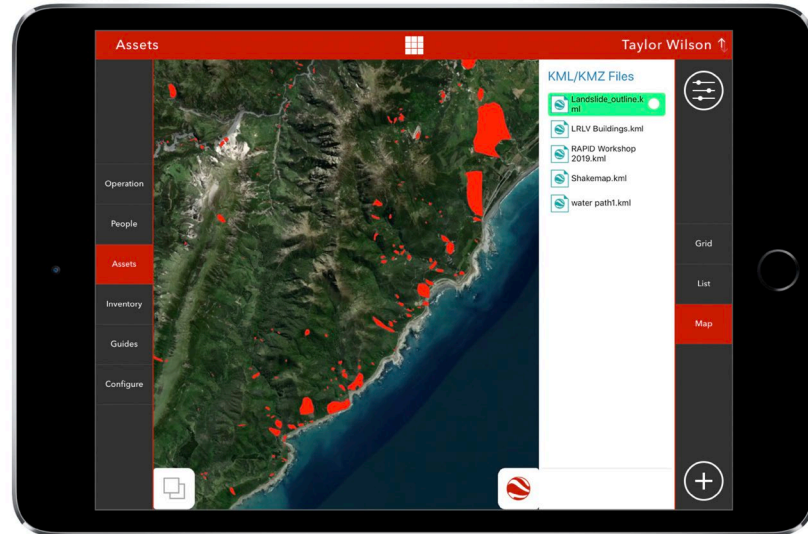
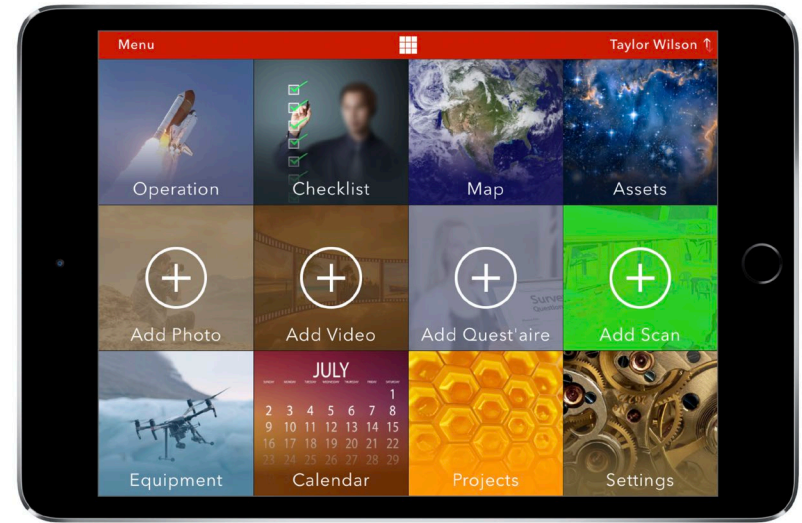
# RApp Overview

1. RApp mobile application is developed and optimized for GPS-enabled (i.e., cellular capability) iPads (iOS). These are free to borrow from the RAPID Facility. RApp complies with NSF cybersecurity guidelines. It works offline.

2. RApp features include (among others)

- Ability to take photos and record videos and audio
- Checklists
- RAPID instrumentation functions
- Upload KML-formatted maps for offline use
- Questionnaires, and now, advanced questionnaires!
- Fully customizable

What is next? Based on community input: I-phone version, teams function, and more!



# RApp Overview

1. RApp mobile application is developed and optimized for GPS-enabled (i.e., cellular capability) I-pads (iOS). These are free to borrow from the RAPID Facility. RApp complies with NSF cybersecurity guidelines. It works offline.

2. RApp features include

- Take photos and record videos and audio
- Checklists
- RAPID instrumentation functions
- Upload KML-formatted maps for offline use
- Questionnaires, and now, advanced questionnaires!
- Fully customizable

What is next? Based on community input: I-phone version, teams function, and more!

3. RApp was developed to directly interface with Designsafe. Data is synced (and thus backed up) in real-time. Data may be displayed in the Hazmapper web interface.



Miami



# What is RApp's role in the RAPID Facility?

## RAPID Science Plan:

- Data collection before, during, and after events
- Collection and synthesis of data over spatial scales
- *Data collection associated with social, built, and natural environmental conditions*
- *Collection and synthesis of multidisciplinary data sets*



Amanda South, reporter, Newstalk ZB, 8-5-12.

I: Right, let's start with February 22, can you describe your key experiences on that day?

IP: I was actually at home, ironically, because the Christchurch City Council was having its first dedicated earthquake recovery meeting so I would have started work at 1, so I was always haunted by that, but I was in Angus' bedroom getting him off for a nap and I guess the rest is history. The house started to explode around us. I just took him in by body in the middle of the room and things just fell around us. We were in this little bubble in the middle and it was horrific because everyone has that internal counter and you thought 'Oh my god this is going to on too long, it's supposed to stop'. It got angrier and stuff was just erupting in the hallway. I can just remember knowing it was horrific and trying to think about my kid and I can remember my



## Some ways that you can use RApp

- Interview/survey + images of (or survey) damage severity
- Develop study design in GIS, and pre-load maps of survey locations
- Interface and coordinate with a remote support team in real-time