



# Publish Your Data! Event

August 27, 2020

CONVERGE-NSF Award #1841338 | DesignSafe-NSF Award #1520817 | RAPID-NSF Award #1611820



# Welcome!



We are  
**so excited**  
you are here!

Noon-12:15 p.m. MDT

# A Two-Year Journey....



L-R: Maria, Tim, and Craig put the social science and interdisciplinary “data modelers” to work! **October 2018**

“The Call” -  
**June 2018**



CONVERGE and DesignSafe partnership formally  
established in **August 2018**



The DesignSafe team interviews ~80 social science, urban planning, public health and medicine, and engineering researchers at the Natural Hazards Workshop. **July 2019**



DesignSafe releases the field research data  
model for social science and interdisciplinary teams  
in **May 2020**

# Objectives Today

- Learn about new DesignSafe capabilities for the social sciences and interdisciplinary research
- Understand and discuss *why* publishing and sharing data and instruments is important
- Learn how to ethically publish your own data and instruments
- Move forward with receiving a permanent DOI for your data and/or instruments
- Become a CONVERGE Data Ambassador!





He's in China.

[https://www.youtube.com/watch?v=HK8NNi3XS6Q&feature=emb\\_logo](https://www.youtube.com/watch?v=HK8NNi3XS6Q&feature=emb_logo)



*“For the past three decades, leaders of the scientific community have called for sharing access to scientific data... The main rationales for data sharing, [include]:*

- *To reproduce or to verify research*
- *To make the results of publicly funded research available to the public*
- *To enable others to ask new questions of extant data*
- *To advance the state of research and innovation*

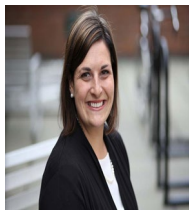
*Increasingly, funding agencies around the world are requiring investigators to share data created with public support.”*

-Source: [Public Access to NSF-Funded Research Data for the Social, Behavioral, and Economic Sciences, 2016](#)

# Publish Your Data! Event



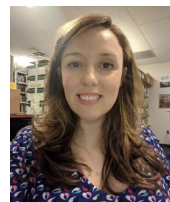
**Jessica Austin**  
University of Colorado Boulder



**Nicole Errett**  
University of Washington



**David Hondula**  
Arizona State University



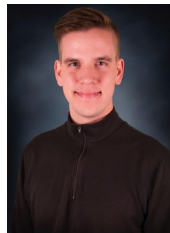
**Valerie Marlowe**  
University of Delaware



**Nathanael Rosenheim**  
Texas A&M University



**Maria Esteva**  
Texas Advanced Computing Center



**Craig Jansen**  
Texas Advanced Computing Center



**Mahyar Sharifi Mood**  
Texas Advanced Computing Center



**Keith Strmiska**  
Texas Advanced Computing Center



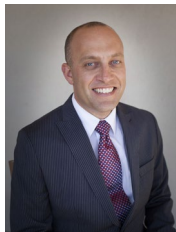
**Troy Tanner**  
University of Washington



**Ellen Rathje**  
University of Texas at Austin  
PI, DesignSafe



**Tim Cockerill**  
Director of User Services at TACC



**Scott Brandenburg**  
University of California Los Angeles



**Joseph Wartman**  
University of Washington  
PI, RAPID



**Lori Peek**  
University of Colorado Boulder  
PI, CONVERGE



# CONVERGE Team



**Lori Peek**  
Principal Investigator



**Rachel Adams**  
Postdoctoral Research Associate



**Candace Evans**  
Graduate Research Assistant



**Jessica Austin**  
Graduate Research Assistant



**Jennifer Tobin**  
Senior Personnel



**Jolie Breeden**  
Editor and Science Communicator



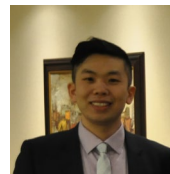
**Jeffrey Gunderson**  
Web and Data Manager



**Courtney Welton-Mitchell**  
Research Associate



**Heather Champeau**  
Graduate Research Assistant



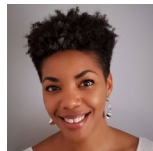
**Haorui Wu**  
Research Affiliate



**Melissa Villarreal**  
Graduate Research Assistant



**Jocelyn West**  
Graduate Research Assistant



**Nnenia Campbell**  
Research Associate



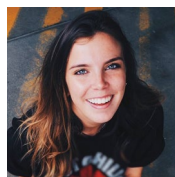
**Emma Hines**  
Research Affiliate



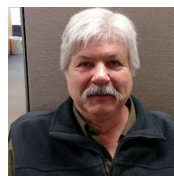
**Sandra Appiah**  
Research Affiliate



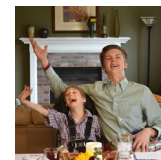
**Kamryn Roper-Fetter**  
Undergraduate Research Assistant



**Helen Gardner**  
Undergraduate Research Assistant



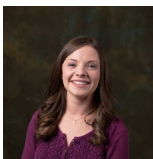
**Luther Green**  
Research Affiliate



**Charlie Beller**  
Undergraduate Research Assistant



**Megan Costa**  
Undergraduate Research Assistant



**Katie Murphy**  
Administrative Associate



**Jason Van Horn**  
Program Manager



# Self-Introductions

## **Data Overview / Data Publication Goals + Questions – 2 minutes**

- Lauren Clay
- Candace Evans
- Steve French
- Alex Greer
- Eric Kennedy
- Sara McBride
- Lori Peek and Jessica Austin
- Nathanael Rosenheim and Maria Watson
- Gavin Smith
- Jonathan Sury
- Tristan Wu and Sky Huang

### **Data Templates:**

<https://drive.google.com/drive/folders/1UZBANy2RiHk2Pi9E3Hk9opEyrx21IXEt?usp=sharing>

## **Participant Observer Self-Introductions – 30 seconds**

12:15-12:45 p.m. MDT



# Overview

12:45-1:05 p.m. MDT  
Rathje and Esteva




# Data Model Demonstration and Hands-On Training

1:05-2:00 p.m. MDT  
Jansen and Sharifi

# Next Steps to Data Publication

<https://signup.com/go/fxHQnhr>

# Open Data, DOI's and Data Discoverability






**CONVERGE Data Ambassador Checklist**

Name: \_\_\_\_\_

Title and Affiliation: \_\_\_\_\_

Activity	Date Completed
Read this webpage on preparing a Data Management Plan carefully: <a href="https://converge.colorado.edu/data/data-management">https://converge.colorado.edu/data/data-management</a> . This page includes several tips and insights that will help you to prepare your data for publication.	
Complete the data template in advance of the Publish Your Data! event.	
Prepare your own data, data collection protocols/reports, and/or research instruments and ensure they are ready for curation during or following the event. These materials will help ensure a comprehensive data publication that can be used and analyzed by future researchers or research teams. <ul style="list-style-type: none"> <li>• If your data involves human subjects, you must provide documentation of your institution's IRB approval.</li> <li>• All human subjects data should be properly de-identified based on ethical best practices, institutional requirements, and any other commitments to participants.</li> </ul>	
Carefully review the DesignSafe data curation guidelines (click on the Field Research tab) ( <a href="https://www.designsafe-ci.org/rw/inter-guides/data-curation-publication/">https://www.designsafe-ci.org/rw/inter-guides/data-curation-publication/</a> ), RAPID website ( <a href="https://rapid.designsafe-ci.org/">https://rapid.designsafe-ci.org/</a> ), and CONVERGE website ( <a href="https://converge.colorado.edu/">https://converge.colorado.edu/</a> ) before the meeting so you can familiarize yourself with the research teams, missions, and resources available from these NSF-supported facilities.	
If you have not done so already, all participants should register for a DesignSafe account in advance of the event: <a href="https://www.designsafe-ci.org/account/register/">https://www.designsafe-ci.org/account/register/</a>	
If you have not done so already, all participants should register for a DesignSafe account in advance of the event: <a href="https://www.designsafe-ci.org/account/register/">https://www.designsafe-ci.org/account/register/</a>	
Attend the Publish Your Data! event on August 4 or August 27, 2020.	

CONVERGE—NSF Award #1841338 | RAPID—NSF Award #1611820 | DesignSafe—NSF Award #1520817


2:25-3:00 p.m. MDT  
Peek and All Participants



**Help advance social science and interdisciplinary research  
by helping others to...**

Find and Curate  
Their Data

Share Their  
Legacy and New  
Data

Coordinate w/  
Other  
Researchers  
(private and  
public data  
sharing options)

Encourage  
Scientific  
Replication (not  
duplication)

Get Credit w/  
DOI's while  
Advancing  
Science and  
Practice

Your ideas then....

[https://docs.google.com/spreadsheets/d/1vCuxtQ4f3TBDm60FdIDCanjhThc776RK\\_seffZY6dXc/edit?usp=sharing](https://docs.google.com/spreadsheets/d/1vCuxtQ4f3TBDm60FdIDCanjhThc776RK_seffZY6dXc/edit?usp=sharing)

Your ideas now....

THANK  
YOU!