



Social Science, Engineering, and Interdisciplinary Extreme Events Research



Award #1841338

CONVERGE is committed to supporting ethical and rigorous convergence research that seeks to solve pressing social and environmental challenges.



Research
Networks

We coordinate 8 Extreme Events Research / Reconnaissance (EER) networks that bring together natural hazards researchers across disciplinary boundaries.



Resources

Our training modules, extreme events research check sheets, and other resources accelerate the education and mentoring of a diverse next generation of researchers.



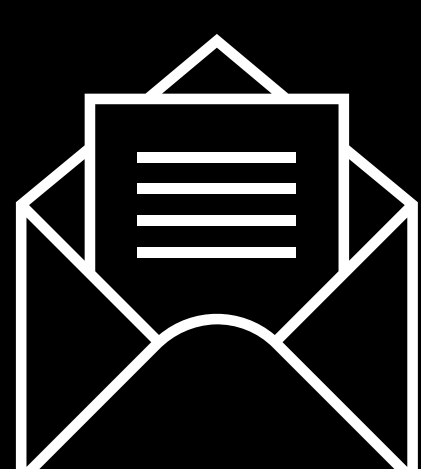
Data

Our Data Ambassadors program trains social science and interdisciplinary researchers to manage, publish, and reuse research protocols, instruments, and data.



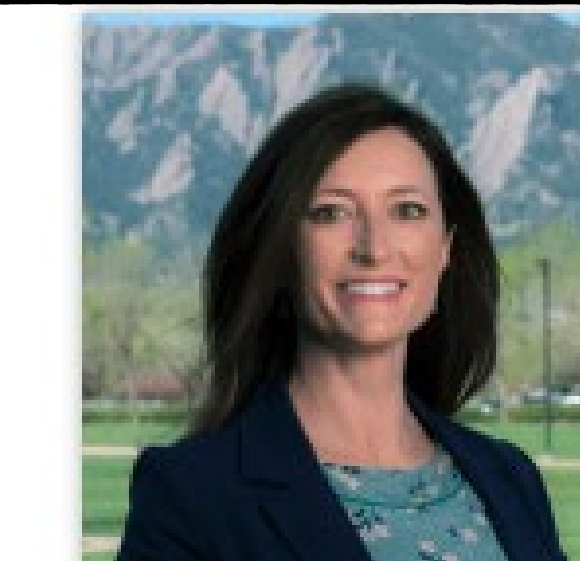
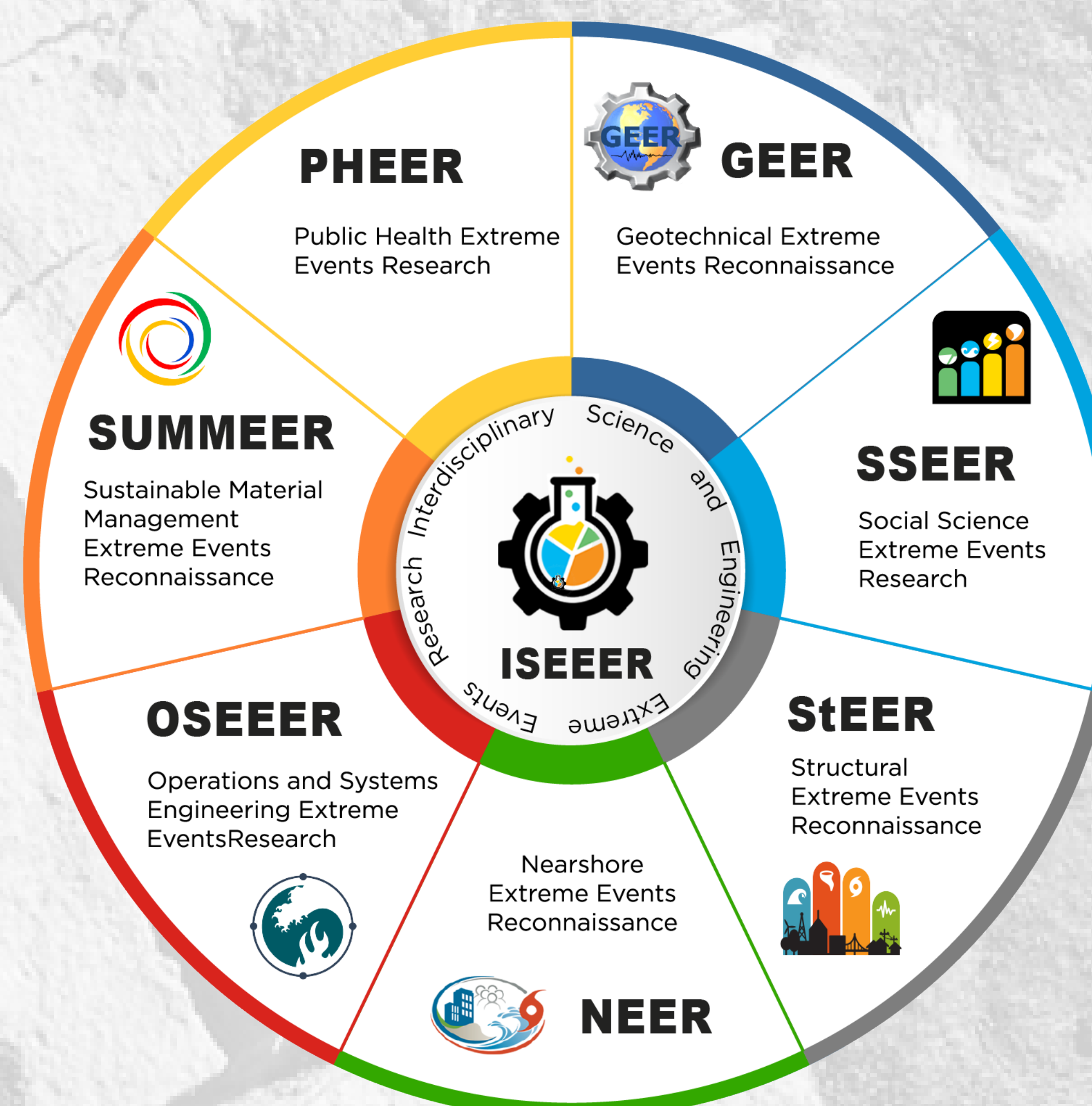
Communications

We host regular webinars and virtual forums to help educate and connect members of social science, engineering, and interdisciplinary research communities.

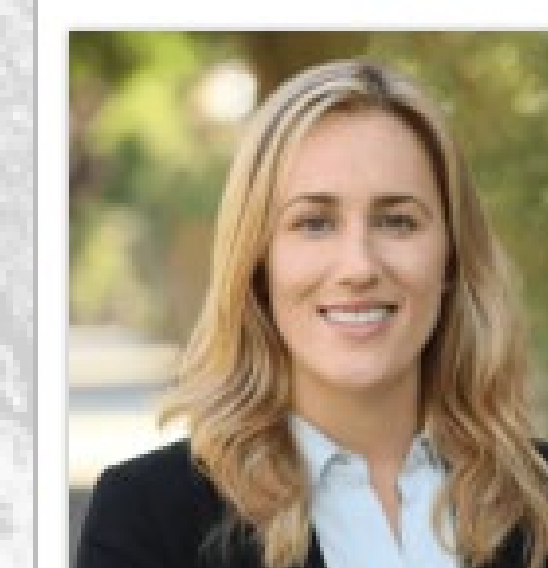


Subscribe to CONVERGE Updates
converge.colorado.edu/signup

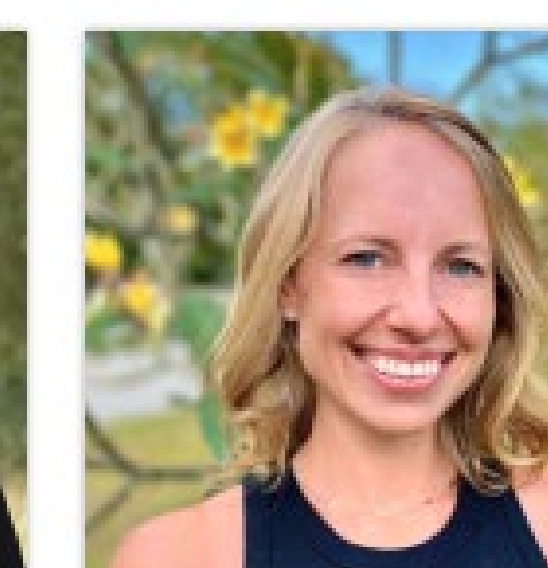
Research Networks



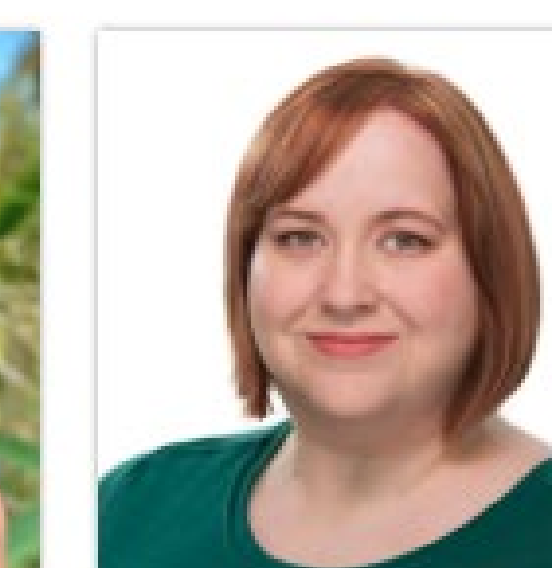
Lori Peek
Principal Investigator, CONVERGE, Social Science Extreme Events Research (SSEER) Network, and Interdisciplinary Science and Engineering Extreme Events Research (ISEER) Network
lori.peek@colorado.edu
[Bio](#) [View CV](#)



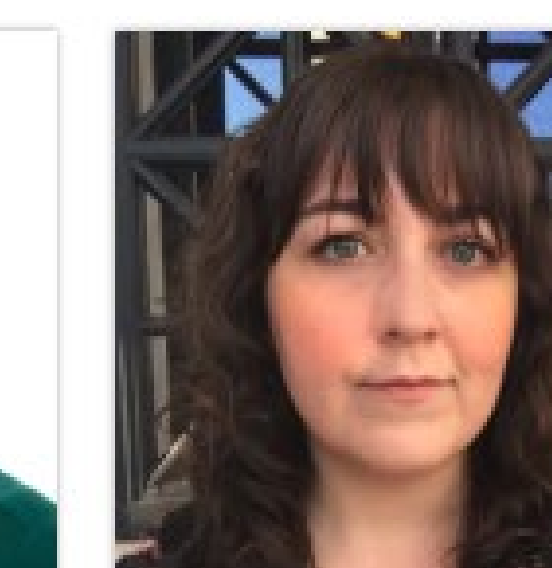
Rachel Adams
Research Associate and Lead Training Module Developer, CONVERGE
rachel.adams-1@colorado.edu
[Bio](#) [View CV](#)



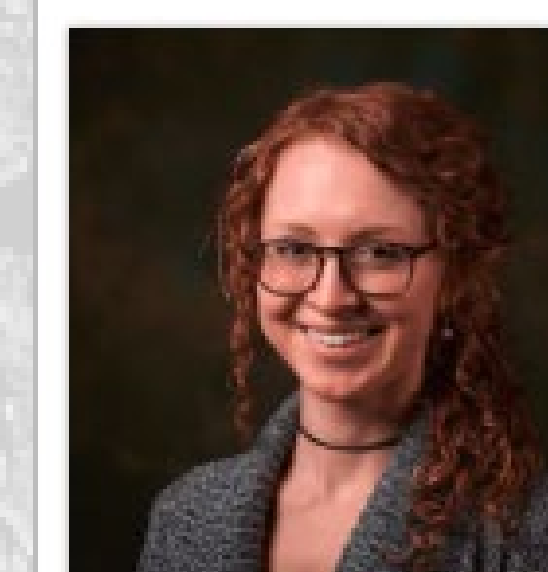
Jennifer Tobin
Research Associate, CONVERGE, SSEER, and ISEER
jennifer.l.tobin@colorado.edu
[Bio](#) [View CV](#)



Jessica Austin
Graduate Research Assistant, CONVERGE and Data Manager, SSEER
jess.austin@colorado.edu
[Bio](#) [View CV](#)



Heather Champeau
Graduate Research Assistant, CONVERGE and Data Analyst, SSEER
heather.champeau@colorado.edu
[Bio](#) [View CV](#)



Candace Evans
Graduate Research Assistant and Co-Lead Training Module Developer, CONVERGE
candace.evans@colorado.edu
[Bio](#) [View CV](#)



Melissa Villarreal
Graduate Research Assistant, CONVERGE
melissa.villarreal@colorado.edu
[Bio](#) [View CV](#)



Jocelyn West
Graduate Research Assistant, CONVERGE
jocelyn.west@colorado.edu
[Bio](#) [View CV](#)



Haorui Wu
Research Affiliate, CONVERGE
haorui.wu@dal.ca
[Bio](#) [View CV](#)

CONVERGE Team

Resources



Training Modules
The CONVERGE team has developed a series of free, online training modules to help students, researchers, and practitioners to quickly background themselves on fundamental research findings, theory, and methods.
[Learn More](#)



Check Sheets
These short, graphical check sheets are meant to be used as researchers design their studies, prepare to enter the field, conduct field research, and exit the field. The series offers best practices for extreme events research and include check sheets for free to the research community.
[Download Check Sheets](#)



COVID-19 Resources
Following the onset of the global COVID-19 pandemic, CONVERGE mobilized researchers across the United States and around the world. Learn more about the efforts of the COVID-19 Working Groups and other efforts here.
[View All](#)

Data

Ambassadors

Management

Publication

Data

Communications

ENGAGE
WITH US



CONVERGE Virtual Forums
CONVERGE Virtual Forums bring together researchers to communicate, coordinate, and collaborate after major events.

OR ONLINE!



CONVERGE Webinar Series
CONVERGE webinars feature updates regarding new projects and initiatives relevant to various research communities.

IN-PERSON



CONVERGE Presentations
Learn about CONVERGE initiatives and research activities through recent presentation slides and videos.

SSEER Map and Census

2020 SSEER CENSUS

