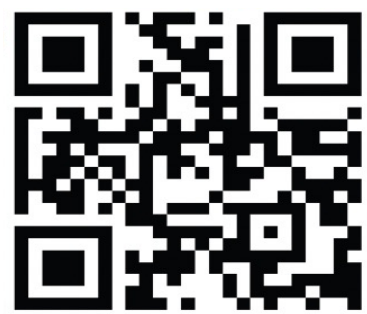


Social Science Extreme Events Research (SSEER) Response

2023 Kahmaranmaras Earthquakes



HAZARDS.COLORADO.EDU



Overview

- Brief Update on SSEER Response and Coordination
- Lessons Learned from Social Science-Led Quick Response Field Team
- Social Science Research Priorities + Ethical, Safety, and Logistical Concerns





SSEER
SOCIAL SCIENCE
EXTREME EVENTS
RESEARCH

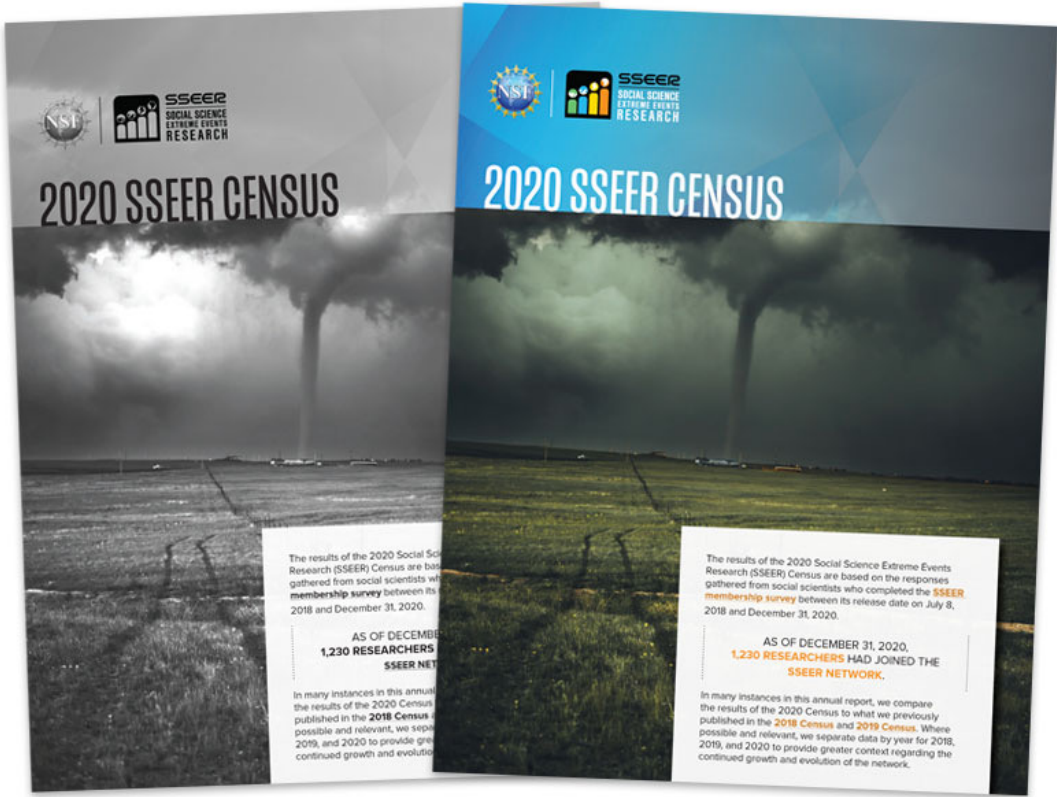
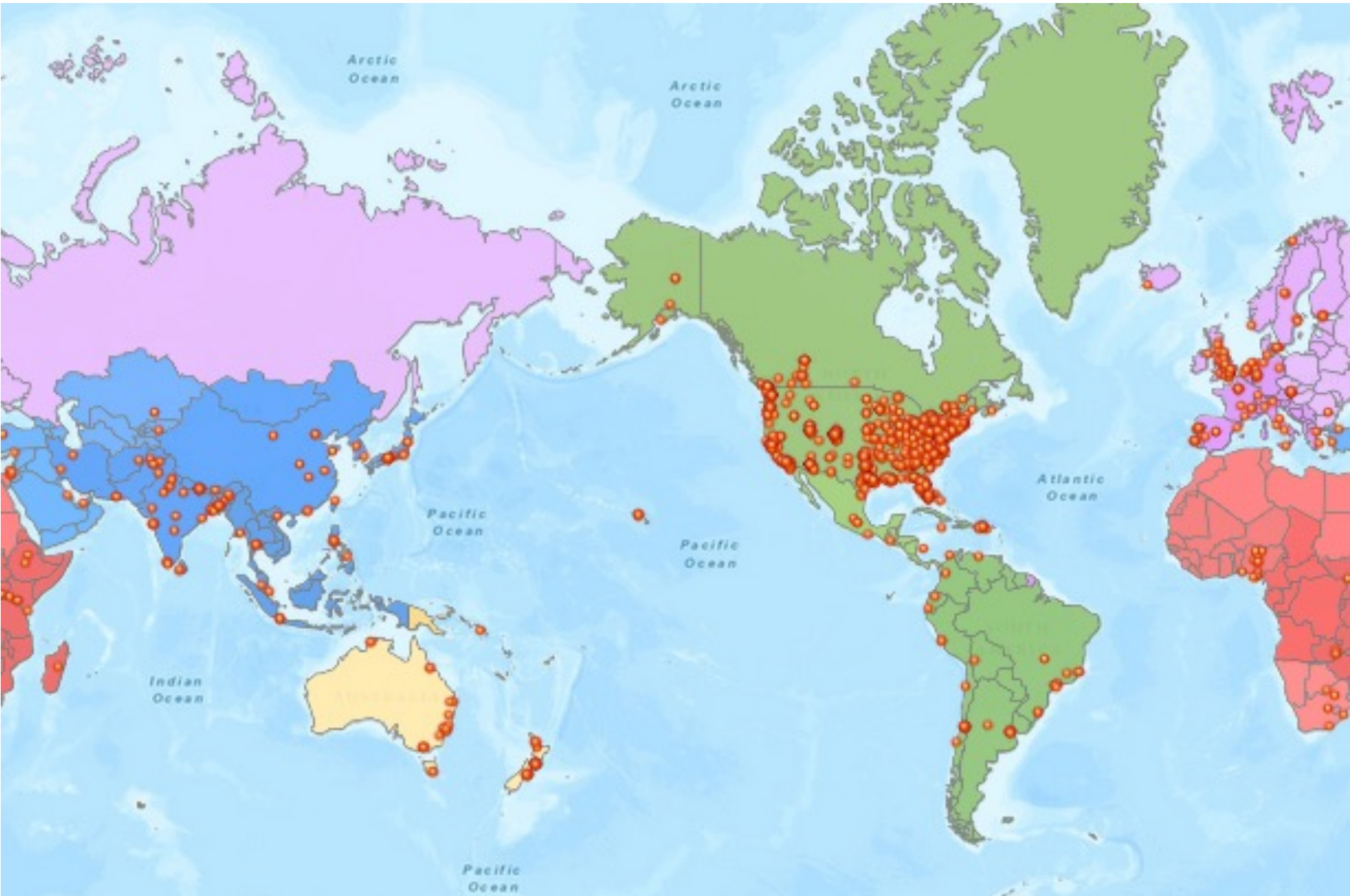
SSEER is a **global network** of 1,500+ social scientists who study hazards and disasters. It seeks to **advance scholarship** on the root causes and human consequences of extreme events by **coordinating social science research teams** in large-scale disasters. Among other resources, SSEER issues an **annual census** report on the state of the social science workforce and maintains an **interactive map** of its researchers.



HAZARDS.COLORADO.EDU



Social Science Extreme Events Research (SSEER) Network



National Science Foundation Award #1841338

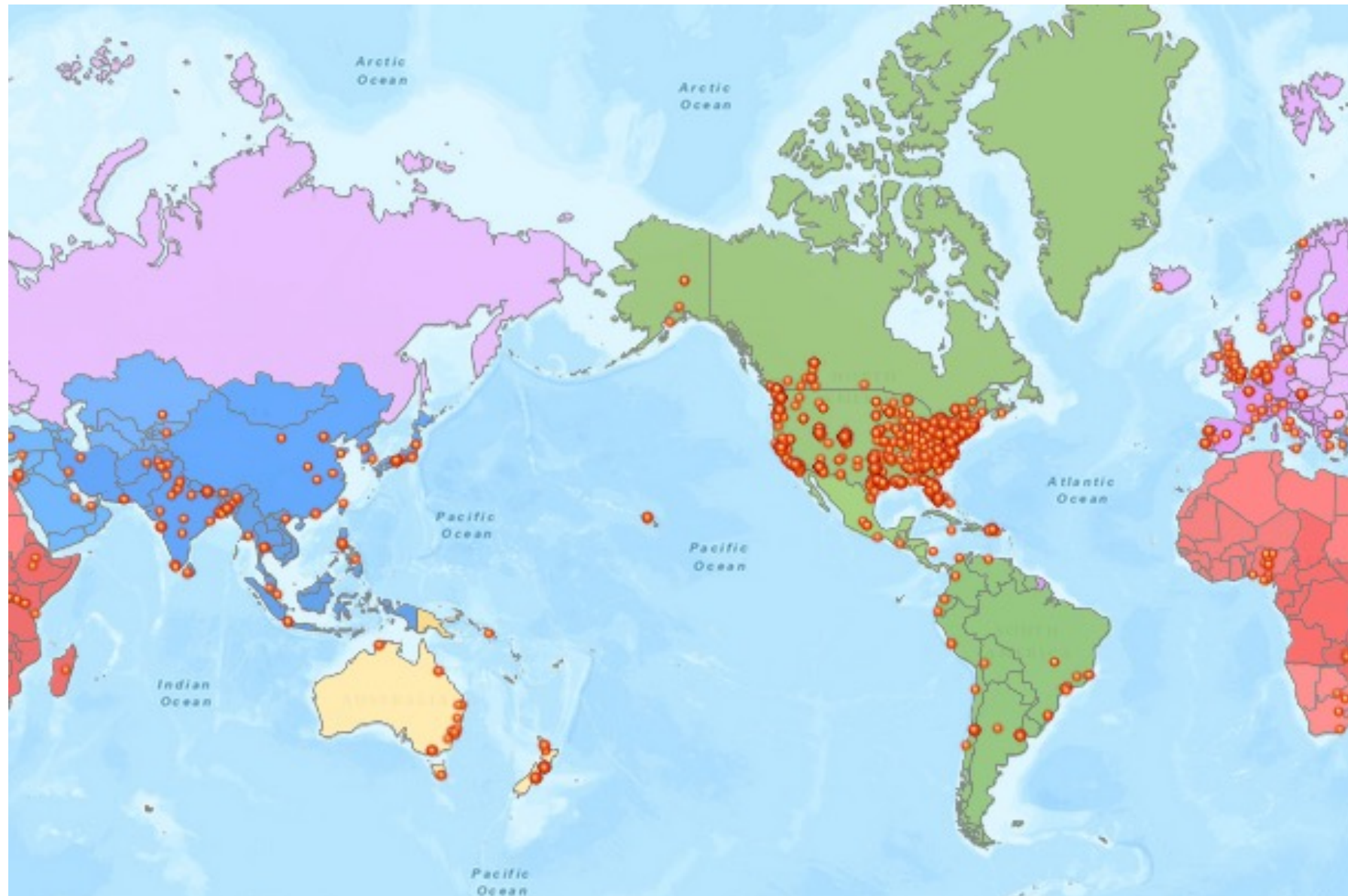
converge.colorado.edu/research-networks/sseer



HAZARDS.COLORADO.EDU



Social Science Extreme Events Research (SSEER) Network



- 25% of SSEER researchers have studied 1 or more earthquakes
- More than 200 total events studied
- Range 1-20+ events researched by individual SSEER researchers

National Science Foundation Award #1841338

converge.colorado.edu/research-networks/sseer



HAZARDS.COLORADO.EDU



Most Studied Earthquake Events

Rank	Earthquake	Number of SSEER Researchers
1	Fukushima/Great East Japan Earthquake and Tsunami, 2011	51
2	Haiti Earthquake, 2010	38
3	Christchurch Earthquakes, 2010-2011	36
4	Nepal Earthquake and Flooding, 2015	35
5	Sichuan Wenchuan Earthquake, 2008	15
6	Loma Prieta Earthquake, 1989	13
7	Great Hanshin (Kobe) Earthquake, 1995	13
8	Northridge Earthquake, 1994	12
9	Izmit (Marmara) Earthquake, 1999	12
10	Kaikoura Earthquake, 2016	12
11	Gujarat (Bhuj) Earthquake, 2001	11
12	Chile Earthquake and Tsunami, 2010	10
13	Puebla Earthquake, 2017	8
14	Kashmir Earthquake, 2005	7
15	L'Aquila Earthquake, 2009	6
16	South Napa Earthquake, 2014	5
17	Mexico City Earthquake, 1985	4
18	Nisqually Earthquake, 2001	4
19	Samoa Earthquake and Tsunami, 2009	4
20	Kumamoto Earthquakes, 2016	4



Social Science Extreme Events Research (SSEER) Response



2023 Turkey-Syria Earthquakes

As the human toll of the February 6 earthquakes continues to mount, the Social Science Extreme Events Research (SSEER) network is gathering information and resources regarding a possible **social science-led** or **multi-disciplinary research response**. If you are a SSEER member with information to share or an interest in learning more about social science research following this event, please complete this form.

For additional questions, please contact Lori Peek at sseer@colorado.edu.

Name (First and Last) *





HAZARDS.COLORADO.EDU



Briefing from Quick Response Field Team



Louise Comfort, University of Pittsburgh; University of California, Berkeley



Burçak Basbug Erkan, Middle East Technical University, Ankara, Turkey



Süleyman Çelik, Anadolu University, Eskişehir, Turkey

<https://hazards.colorado.edu/research/quick-response-report/funded>



Briefing from Quick Response Field Team



Major Issues

- Cultural, political, social context
- Communications
- Coordination
- Corruption
- Shelter and Displacement
- Psychosocial trauma
- Vulnerable Populations
- Education
- Business and Technology
- Ethical Concerns



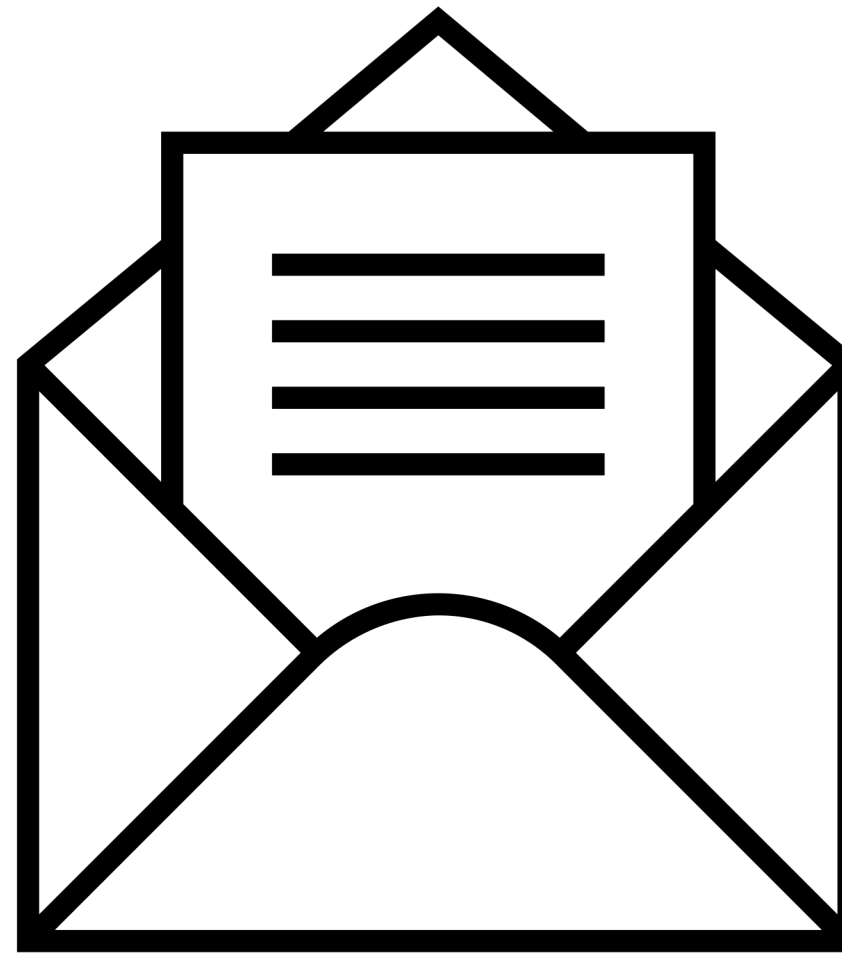
HAZARDS.COLORADO.EDU

hazards.colorado.edu/research/quick-response-report/funded



Visit the Natural Hazards Center website to subscribe to updates!





Subscribe to CONVERGE News Updates
converge.colorado.edu/signup
converge.colorado.edu



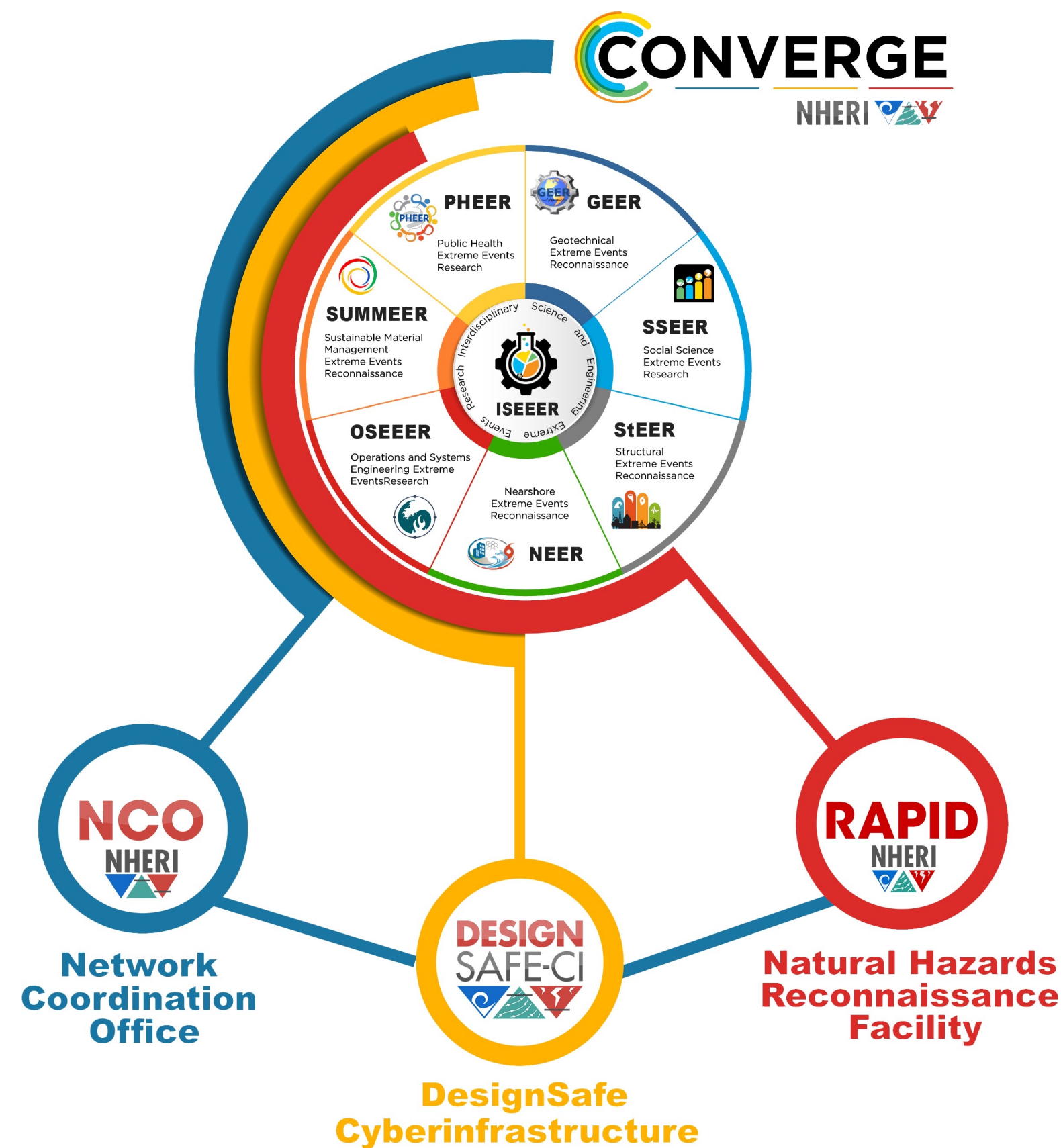
HAZARDS.COLORADO.EDU



NHERI



CONVERGE Research Networks



The 8 NSF-funded Extreme Events Research/Reconnaissance (EER) networks bring together natural hazards researchers across disciplinary boundaries and connect research teams to shared use facilities and resources.