



# Virtual Forum

## 2023 Hawaii Wildfires

Tuesday, August 22, 2023  
2:00 to 3:00 p.m. MDT

[converge.colorado.edu/virtual-forums/social-science-extreme-events-research-sseer-virtual-forum-2023-hawaii-wildfires/](https://converge.colorado.edu/virtual-forums/social-science-extreme-events-research-sseer-virtual-forum-2023-hawaii-wildfires/)

*\*This forum is being **recorded**. The captioned recording and meeting materials will be posted on the CONVERGE Virtual Forums page.\**



Boulder

NATURAL  
HAZARDS  
CENTER



# Purpose

1. **Communicate, Coordinate, Collaborate**
2. **Resource Sharing**
3. **Launched / Planned Research**
  - Ethical and cultural considerations, research access protocols, and research priorities

*\*Please use the **chat box** if you have a **question** or **information** to share.*



# Process

- Research Coordination Networks
  - Resource Sharing – Data, Equipment, Trainings, Etc.
  - Research Projects Already Launched or Planned Research
  - Research Priorities, Protocols, Ethical Considerations
  - Funding Opportunities
- 
- Use chat or hand raise function: 1-2 minute resource sharing / research briefs / requests for collaboration**



# Process

- Research Coordination Networks**
  - Resource Sharing – Data, Equipment, Trainings, Etc.
  - Research Projects Already Launched or Planned Research
  - Research Priorities, Protocols, Ethical Considerations
  - Funding Opportunities
- 
- Use chat or hand raise function: 1-2 minute resource sharing / research briefs / requests for collaboration**



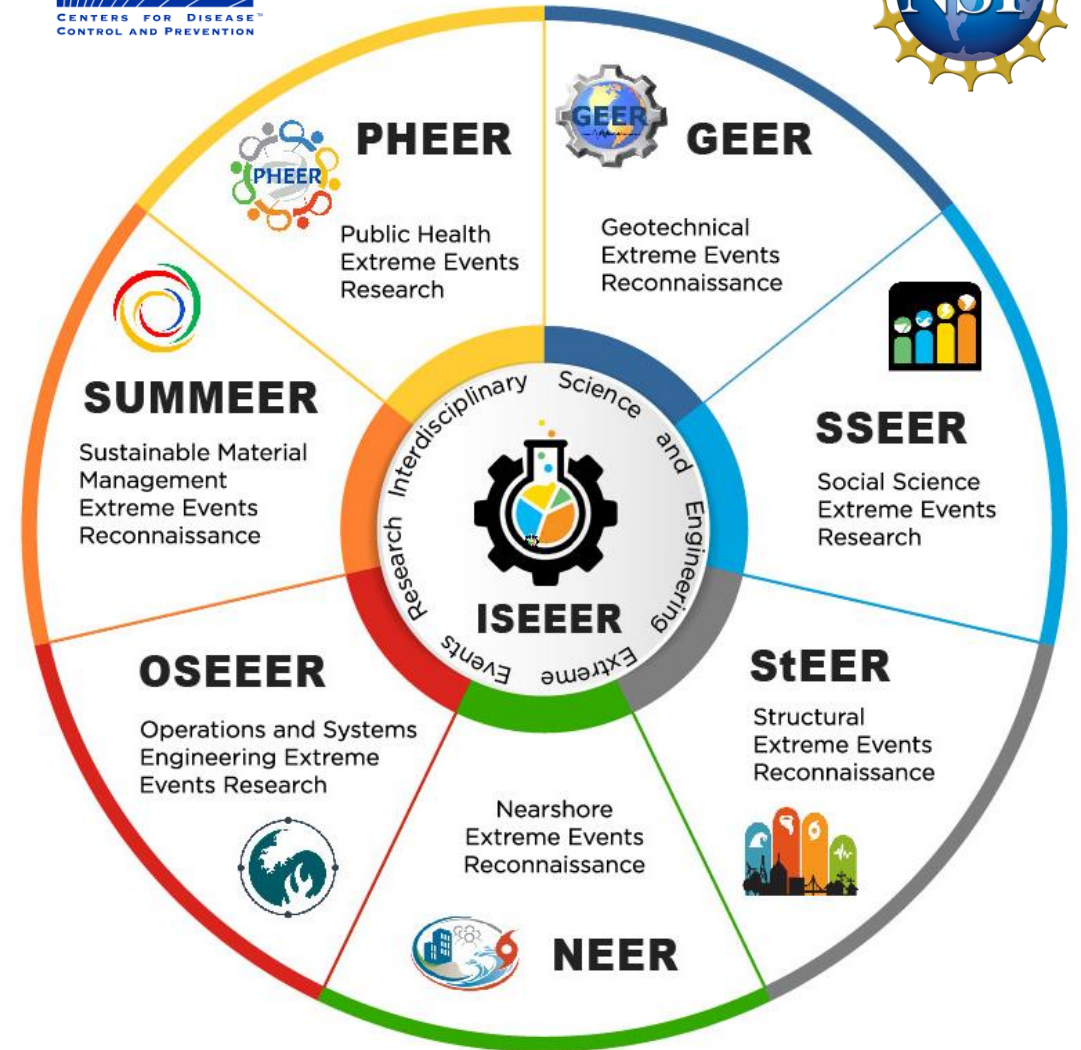
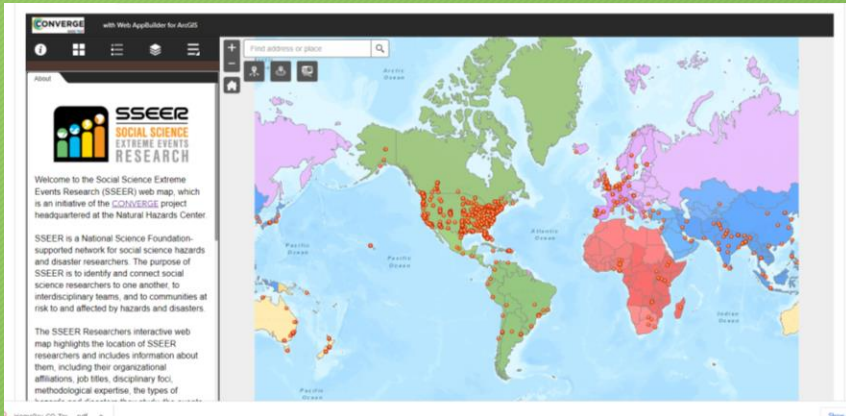
# Research Coordination Networks

Public Health Extreme Events Research (PHEER)

[pheernetwork.org](http://pheernetwork.org)

Social Science Extreme Events Research (SSEER)

[converge.colorado.edu/research-networks/sseer/](http://converge.colorado.edu/research-networks/sseer/)



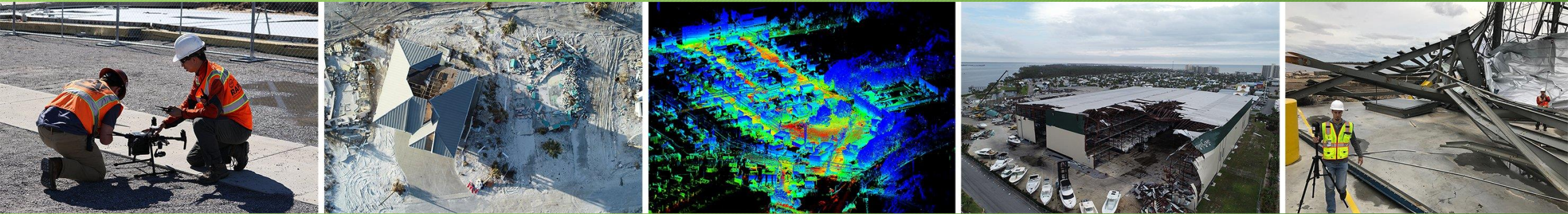
[converge.colorado.edu/research-networks/](http://converge.colorado.edu/research-networks/)

# Process

- Research Coordination Networks
  - Resource Sharing – Data, Equipment, Trainings, Etc.**
  - Research Projects Already Launched or Planned Research
  - Research Priorities, Protocols, Ethical Considerations
  - Funding Opportunities
- 
- Use chat or hand raise function: 1-2 minute resource sharing / research briefs / requests for collaboration**



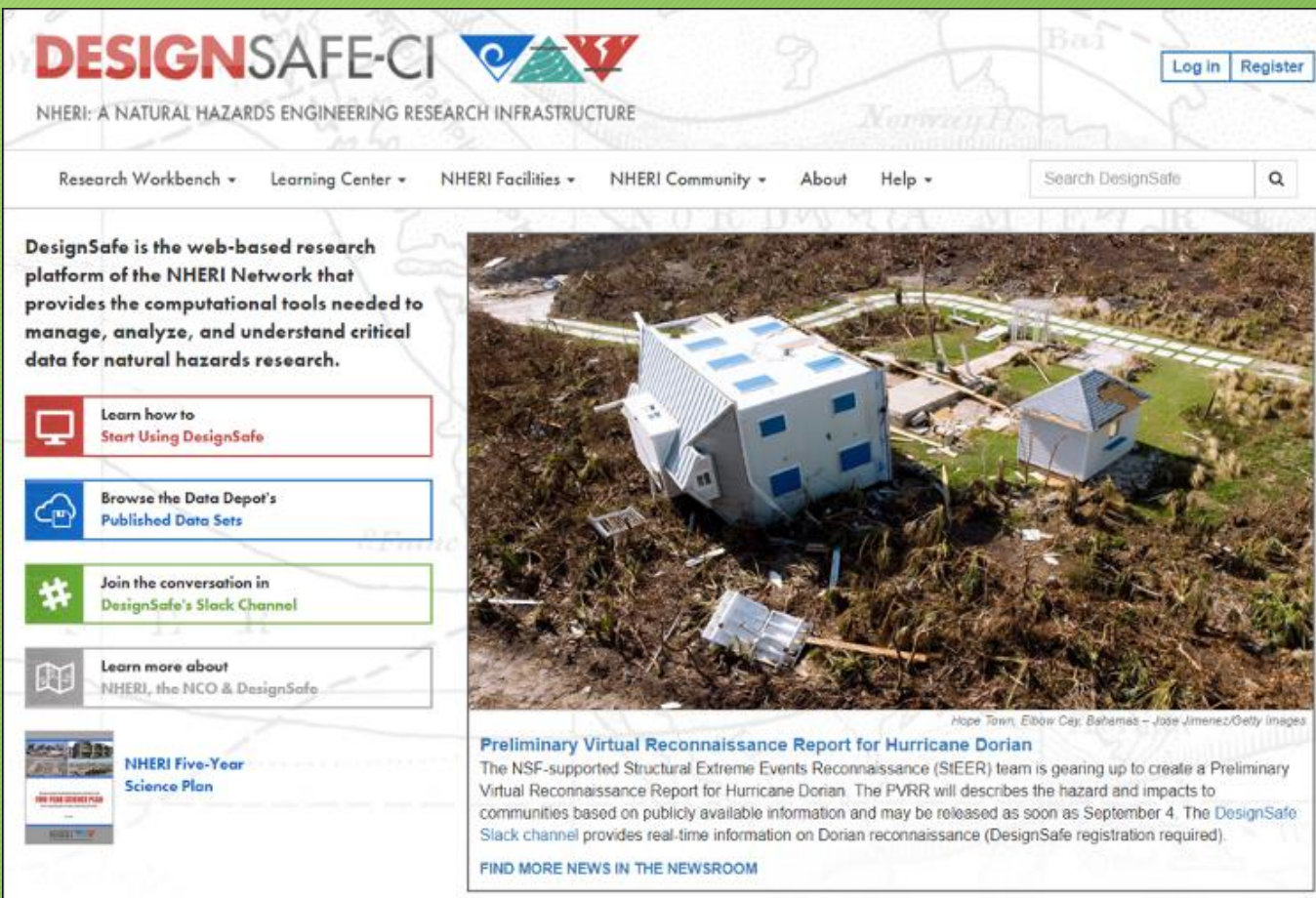
# RAPID Facility



The NSF-supported **RAPID reconnaissance facility** provides investigators with **equipment, software, and support services** to collect, process, and analyze **perishable data** from natural hazards events.

[rapid.designsafe-ci.org](http://rapid.designsafe-ci.org)

# DesignSafe Cyberinfrastructure



The screenshot shows the DesignSafe-CI website homepage. At the top left is the logo "DESIGNSAFE-CI" with the NHERI logo and the text "NHERI: A NATURAL HAZARDS ENGINEERING RESEARCH INFRASTRUCTURE". To the right are "Log in" and "Register" buttons. Below the header is a navigation menu with links: "Research Workbench", "Learning Center", "NHERI Facilities", "NHERI Community", "About", and "Help". A search bar labeled "Search DesignSafe" is also present. The main content area features a large image of a damaged building in Hope Town, Elbow Cay, Bahamas, with the caption "Hope Town, Elbow Cay, Bahamas - Jose Jimenez/Getty Images". Below the image is a news article titled "Preliminary Virtual Reconnaissance Report for Hurricane Dorian" with a sub-headline "The NSF-supported Structural Extreme Events Reconnaissance (SEER) team is gearing up to create a Preliminary Virtual Reconnaissance Report for Hurricane Dorian. The PVRR will describe the hazard and impacts to communities based on publicly available information and may be released as soon as September 4. The DesignSafe Slack channel provides real-time information on Dorian reconnaissance (DesignSafe registration required)." and a link "FIND MORE NEWS IN THE NEWSROOM". On the left side of the page, there are four promotional boxes: "Learn how to Start Using DesignSafe", "Browse the Data Depot's Published Data Sets", "Join the conversation in DesignSafe's Slack Channel", and "Learn more about NHERI, the NCO & DesignSafe". At the bottom left, there is a link to the "NHERI Five-Year Science Plan".



The NSF-supported DesignSafe Cyberinfrastructure provides cloud-based tools to **manage, analyze, and publish data** to understand the impacts of natural hazards.

[designsafe-ci.org/about/designsafe/](https://designsafe-ci.org/about/designsafe/)



# CONVERGE Training Modules



The NSF-supported CONVERGE facility has developed a series of **training modules** that focus on basic and advanced skills and knowledge to advance the ethical conduct of hazards and disaster research.

<p><b>Cultural Competence in Hazards and Disaster Research</b></p> <p>This module focuses on culturally competent research and offers guidance on how hazards and disaster researchers can build cultural awareness, knowledge, sensitivity, and competence as a multi-step and ongoing process.</p> <p><b>Release Date:</b> June 2019</p> <p><b>Authors:</b> Haorui Wu, Rachel M. Adams, Candace M. Evans, Melissa Villarreal, Lori Peek, and Irena Papadopoulos</p> <p><b>Funding Support:</b> National Science Foundation</p>	<p><b>Disaster Mental Health</b></p> <p>This module examines mental health outcomes associated with disasters, with a particular emphasis on risk factors that make certain populations vulnerable to poor disaster mental health outcomes over time.</p> <p><b>Release Date:</b> September 2019</p> <p><b>Authors:</b> Rachel M. Adams, Candace M. Evans, and Lori Peek</p> <p><b>Funding Support:</b> Centers for Disease Control and Prevention and National Science Foundation</p>	<p><b>Institutional Review Board (IRB) Procedures and Extreme Events Research</b></p> <p>This module introduces users to IRB procedures and provides advice regarding how to work with IRBs to ensure ethical approaches to extreme events research.</p> <p><b>Release Date:</b> April 2020</p> <p><b>Authors:</b> Haorui Wu, Melissa Villarreal, Rachel M. Adams, Candace M. Evans, and Lori Peek</p> <p><b>Funding Support:</b> National Science Foundation</p>	<p><b>Broader Ethical Considerations for Hazards and Disaster Researchers</b></p> <p>This module focuses on broader ethical considerations for research. It describes how researchers can navigate ethical landmines while developing a flexible and robust ethical toolkit for researching hazards and disasters.</p> <p><b>Release Date:</b> January 2021</p> <p><b>Authors:</b> Rachel M. Adams, Candace M. Evans, and Lori Peek</p> <p><b>Funding Support:</b> Centers for Disease Control and Prevention and National Science Foundation</p>	<p><b>Collecting and Sharing Perishable Data</b></p> <p>This module defines perishable data and provides recommendations to address ethical and logistical challenges for collecting and sharing this type of data after disasters.</p> <p><b>Release Date:</b> May 2021</p> <p><b>Authors:</b> Candace M. Evans, Rachel M. Adams, and Lori Peek</p> <p><b>Funding Support:</b> Centers for Disease Control and Prevention and National Science Foundation</p>	<p><b>Conducting Emotionally Challenging Research</b></p> <p>This module defines emotionally challenging research and highlights the ways that recognizing researchers' emotions can lead to more ethical and methodologically sound research practices in the context of extreme events.</p> <p><b>Release Date:</b> August 2020</p> <p><b>Authors:</b> Tracy Fehr, Skye Niles, Bertha Alicia Bermudez Tapia, Candace M. Evans, Rachel M. Adams, and Lori Peek</p> <p><b>Funding Support:</b> National Science Foundation</p>
--	--	---	---	--	--

[converge.colorado.edu/resources/training-modules/](https://converge.colorado.edu/resources/training-modules/)



# CONVERGE Extreme Events Research Check Sheets



[converge.colorado.edu/resources/check-sheets/](http://converge.colorado.edu/resources/check-sheets/)





Disasters

Our Funds

Consulting Services

Educational Resources

Blog



Partner With Us

Give Now

# 2023 North American Wildfires

Support Hawaii wildfire recovery



[disasterphilanthropy.org/disasters/2023-north-american-wildfires/](https://disasterphilanthropy.org/disasters/2023-north-american-wildfires/)

[disasterphilanthropy.org/events/hawaii-wildfires-what-will-recovery-look-like/](https://disasterphilanthropy.org/events/hawaii-wildfires-what-will-recovery-look-like/)

# Process

- Research Coordination Networks
  - Resource Sharing – Data, Equipment, Trainings, Etc.**
  - Research Projects Already Launched or Planned Research
  - Research Priorities, Protocols, Ethical Considerations
  - Funding Opportunities
- 
- Use chat or hand raise function: 1-2 minute resource sharing / research briefs / requests for collaboration**



# Process

- Research Coordination Networks
  - Resource Sharing – Data, Equipment, Trainings, Etc.
  - Research Projects Already Launched or Planned Research**
  - Research Priorities, Protocols, Ethical Considerations**
  - Funding Opportunities
- 
- Use chat or hand raise function: 1-2 minute resource sharing / research briefs / requests for collaboration**



# FEMA's Building Science Disaster Support Program



# Three Observations

## 1. *Convergence as healing*

- Trauma Care Compassion Coordination Communications
- Virtual first, Don't come rushing in, Overburdened with outsiders
- Local knowledge, wisdom, culture, **protocol**, *sacred spaces*

## 2. Focus on **Health/Mental Health/Environmental Health**

- Immediate, short-term needs, shelters, transitional housing
- Remains, Hazmat, Debris, Technology, (Social) Science, *Disaster Capitalism*

## 3. **Ethics, Equity and Justice**

- Children, elderly, persons with disabilities / chronic conditions
- Disproportionately disadvantaged groups
- Best practices, transferable systems/approaches/lessons
- Place-based resilience, **values and metrics**

# Research Projects, Priorities, Considerations





# Process

- Research Coordination Networks
  - Resource Sharing – Data, Equipment, Trainings, Etc.
  - Research Projects Already Launched or Planned Research
  - Research Priorities, Protocols, Ethical Considerations
  - Funding Opportunities**
- 
- Use chat or hand raise function: 1-2 minute resource sharing / research briefs / requests for collaboration**



# Funding Opportunities



- NSF RAPID Awards
  - [www.nsf.gov/pubs/policydocs/pappguide/nsf09\\_1/gpg\\_2.jsp#IID1](http://www.nsf.gov/pubs/policydocs/pappguide/nsf09_1/gpg_2.jsp#IID1)
- NSF Regular Awards



- Wildfire Ready Quick Response Research and Data Publication
  - [hazards.colorado.edu/research/weather-ready-research-wildfires](http://hazards.colorado.edu/research/weather-ready-research-wildfires)



- Special Call of the Quick Response Research Award Program
  - [hazards.colorado.edu/signup](http://hazards.colorado.edu/signup)



# Defining, collecting, and sharing perishable disaster data

**Rachel M. Adams** Research Associate, Natural Hazards Center, University of Colorado Boulder, United States, **Candace M. Evans** Doctoral Candidate, Department of Sociology, and Graduate Research Assistant, Natural Hazards Center, University of Colorado Boulder, United States, and **Lori Peek** Professor, Department of Sociology, and Director, Natural Hazards Center, University of Colorado Boulder, United States

*Researchers across disciplines have long sought to collect 'perishable data' in the context of disasters. Yet, this data type is neither consistently defined nor discussed in specific detail in the literature. To address this gap, this paper defines perishable data and provides guidance on ways to improve both how it is collected and shared. Here, perishable data is conceptualised as highly transient data that may degrade in quality, be irrevocably altered, or be permanently lost if not gathered soon after it is generated. Perishable data may include ephemeral information that must be collected to characterise pre-existing hazardous conditions, near-miss events, actual disasters, and longer-term recovery processes. This data may need to be gathered at multiple points in time across varying geographic scales to accurately characterise exposure, susceptibility to harm, or coping capacity. The paper considers ethical and logistical challenges and discusses opportunities to advance equitable perishable data collection and dissemination.*

**Keywords:** data collection, data publication, perishable data, quick response, reconnaissance, research ethics, research coordination

## Introduction

The rapid collection of data immediately prior to, during, and in the direct aftermath of a disaster is a cornerstone of the multidisciplinary field of hazards and disaster studies (Tierney, 2019). Yet, to date, very little has been written about what is often referred to as 'perishable data', including what distinguishes it and what challenges are associated with its collection and dissemination.

Considering this gap in the literature, the goal of this paper is twofold: (i) to clarify the attributes of perishable data; and (ii) to offer recommendations to improve how it is collected and shared. We begin with an overview of how the collection of perishable data has been approached in the hazards and disaster field by both researchers and funders. We then review available literature to synthesise and advance a definition that encompasses the distinctive qualities of perishable data. In our search for available definitions of perishable data, we reviewed relevant peer reviewed and grey literature from the past 50 years and read more than 300 reports of studies funded through the Natural Hazards

Adams, Rachel M., Candace M. Evans, and Lori Peek. (2023). Defining, Collecting, and Sharing Perishable Disaster Data. *Disasters*.

<https://doi.org/10.1111/disa.12592>

# Funding Opportunities



# Process

- Research Coordination Networks
- Resource Sharing – Data, Equipment, Trainings, Etc.
- Research Projects Already Launched or Planned Research
- Research Priorities, Protocols, Ethical Considerations
- Funding Opportunities
- Other Questions, Comments, or Concerns?**



# Thank You for Attending – Please Sign Up for Updates and Resources

[converge.colorado.edu/signup](https://converge.colorado.edu/signup)

[hazards.colorado.edu/signup](https://hazards.colorado.edu/signup)

