

CONVERGE: Investments in Disaster Reconnaissance and Research Infrastructure

Lori Peek, Ph.D.

Professor, Department of Sociology and Director, Natural Hazards Center

Principal Investigator, CONVERGE, SSEER, and ISEEER

University of Colorado Boulder

converge.colorado.edu | hazards.colorado.edu



NSF Award #1635593 and #1841338



Challenges

- Disaster research has historically been highly event-driven and reactive
- Influx of researchers without requisite knowledge or skills
- Communication and coordination issues
- Ethical breaches and cultural missteps
- Collaboration gaps
- Repeated findings versus systematic replication and scientific leaps forward

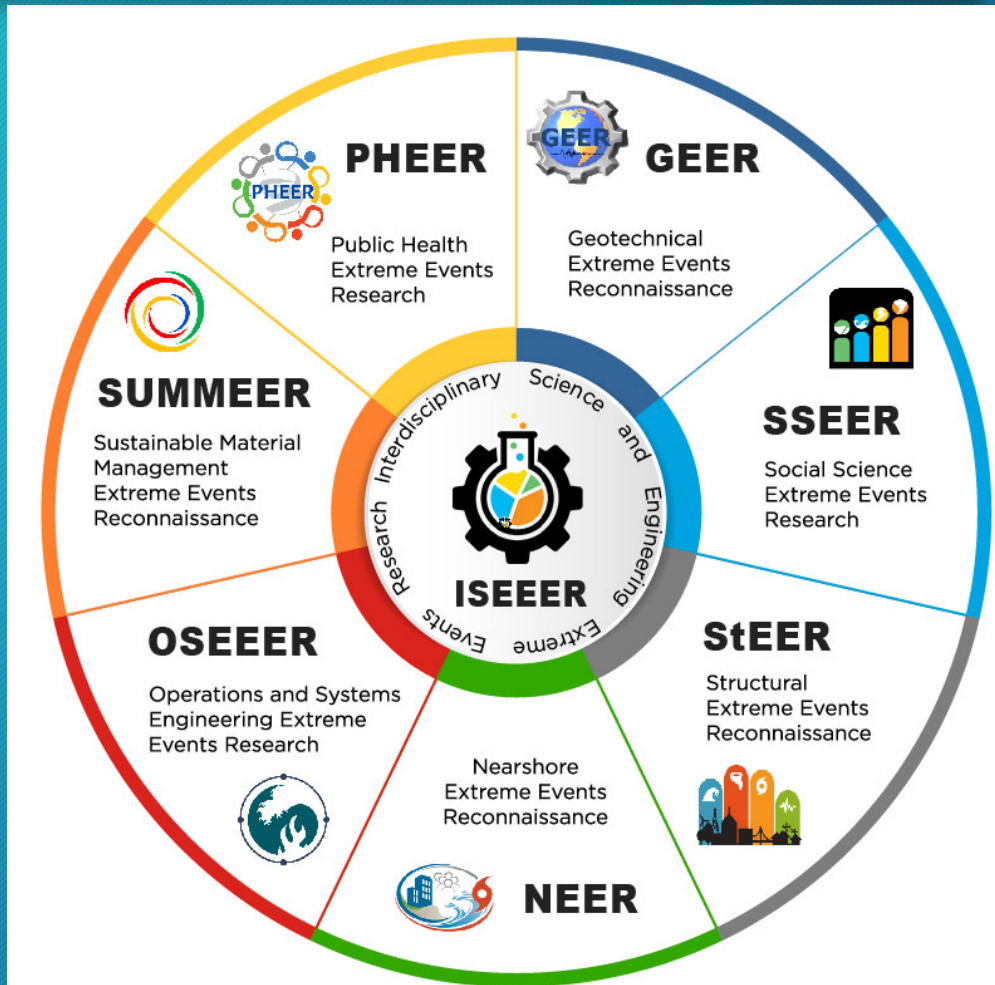


Opportunities

- Identifying researchers in advance of disaster, by discipline and expertise
- Cultivating, training, and supporting hazards and disaster researchers
- Developing academic and inter-organizational collaborations
- Setting disciplinary and interdisciplinary scientific agendas
- Turning new knowledge into action



NSF-Supported Extreme Events Reconnaissance and Research Ecosystem



converge.colorado.edu/category/publications/

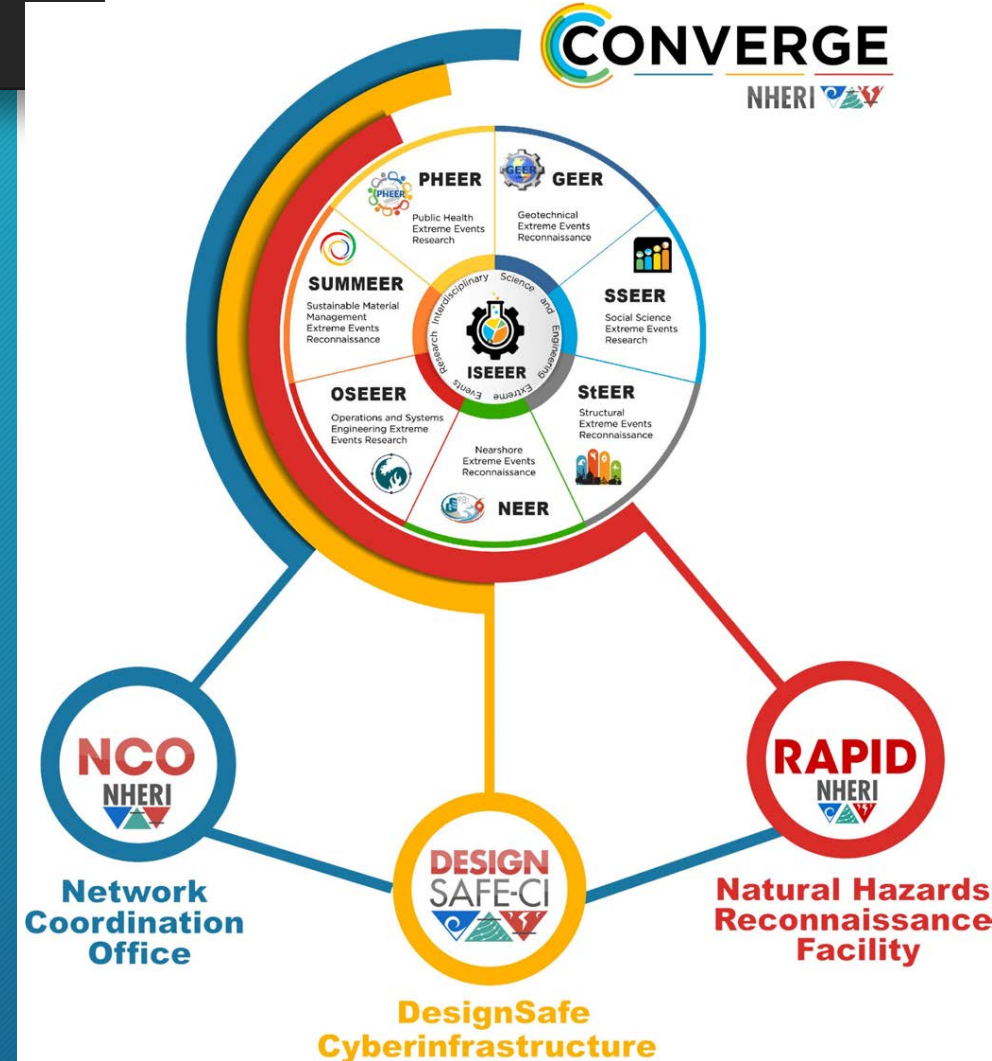
converge.colorado.edu/research-networks



converge.colorado.edu/research-networks/leadership-corps/

An Integrated System for Disaster Reconnaissance and Research

CONVERGE
NHERI



Identify



An Integrated System for Disaster Reconnaissance and Research

<p>Public Health Implications of Hazards and Disaster</p> <p>This module bridges public health and hazards and disaster research by showcasing case studies with important implications for public health.</p> <p>Authors: Hansen, Alexa, Courtney Welton-Mitchell, Rachel M. Adams, Candace M. Evans, and Lori Peek</p> <p>Funding Support: Centers for Disease Control and Prevention and National Science Foundation</p> <p>Register</p>	<p>Reciprocity in Hazards and Disaster Research</p> <p>This Training Module focuses on the reciprocal relationship between researchers and disaster affected communities, with an emphasis on providing mutual benefits for both the people involved with and affected by hazards, as well as those participating in disaster research.</p> <p>Authors: West, Jocelyn, Heather Champeau, Jessica Austin, Candace M. Evans, Rachel M. Adams, and Lori Peek</p> <p>Funding Support: U.S. Geological Survey and National Science Foundation</p> <p>Register</p>	<p>Social Vulnerability and Disasters</p> <p>This Training Module focuses on social vulnerability to hazards and disasters, with an emphasis on population groups that have been identified in the literature as especially at risk to the adverse effects of extreme events.</p> <p>Authors: Adams, Rachel, Candace M. Evans, and Lori Peek</p> <p>Funding Support: Centers for Disease Control and Prevention and National Science Foundation</p> <p>Register</p>	<p>Cultural Competence in Hazards and Disaster Research</p> <p>This Training Module focuses on culturally competent research and offers guidance on how hazards and disaster researchers can build cultural competence.</p> <p>Authors: Wu, Haonui, Rachel M. Adams, Candace M. Evans, Melissa Villarreal, Lori Peek, and Irena Papadopoulos</p> <p>Funding Support: National Science Foundation</p> <p>Register</p>	<p>Disaster Mental Health</p> <p>This Training Module focuses on mental health outcomes associated with disasters, with a particular emphasis on risk factors over time that make certain populations vulnerable to poor disaster mental health outcomes.</p> <p>Authors: Adams, Rachel, Candace M. Evans, and Lori Peek</p> <p>Funding Support: Centers for Disease Control and Prevention and National Science Foundation</p> <p>Register</p>
--	---	--	---	--

Train

Identify



An Integrated System for Disaster Reconnaissance and Research



Communicate, Coordinate, Collaborate

Train

Identify



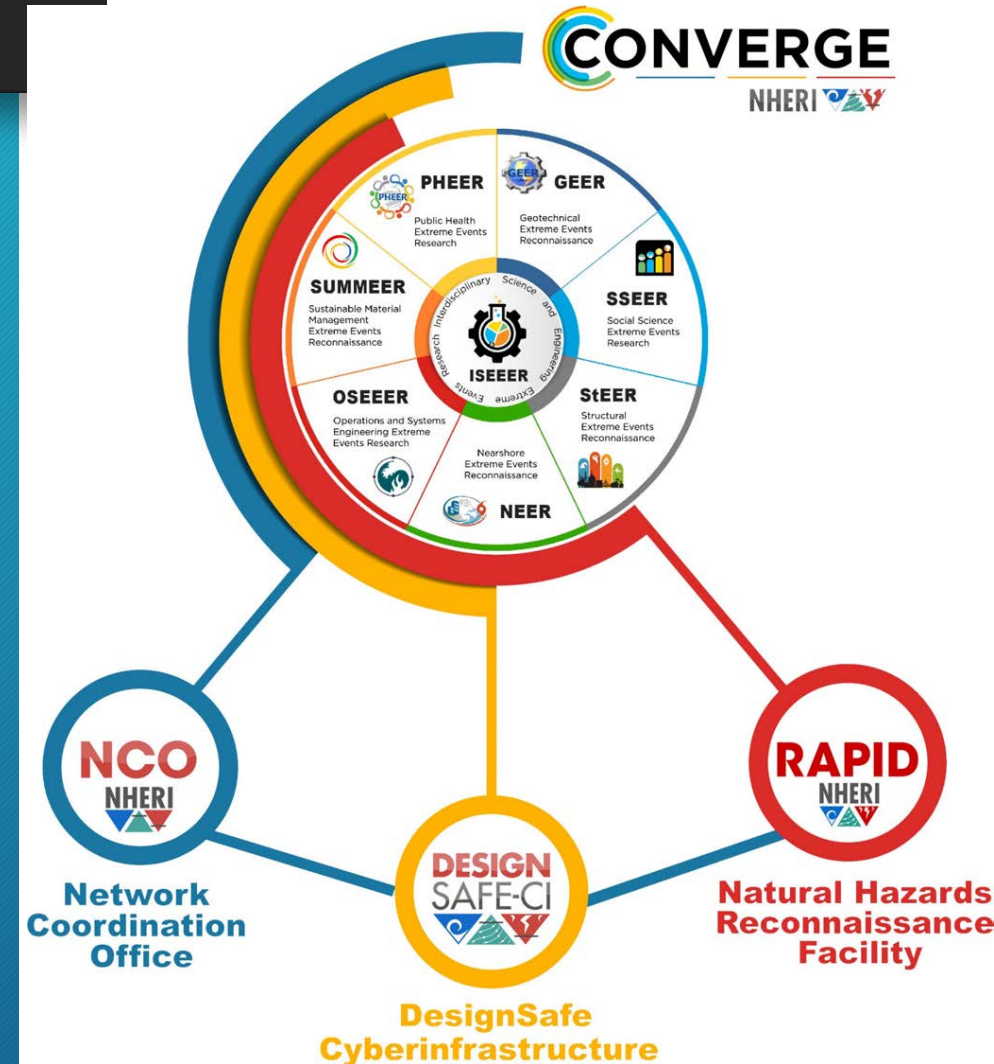
An Integrated System for Disaster Reconnaissance and Research

Rapid Funding

Communicate, Coordinate, Collaborate

Train

Identify



An Integrated System for Disaster Reconnaissance and Research



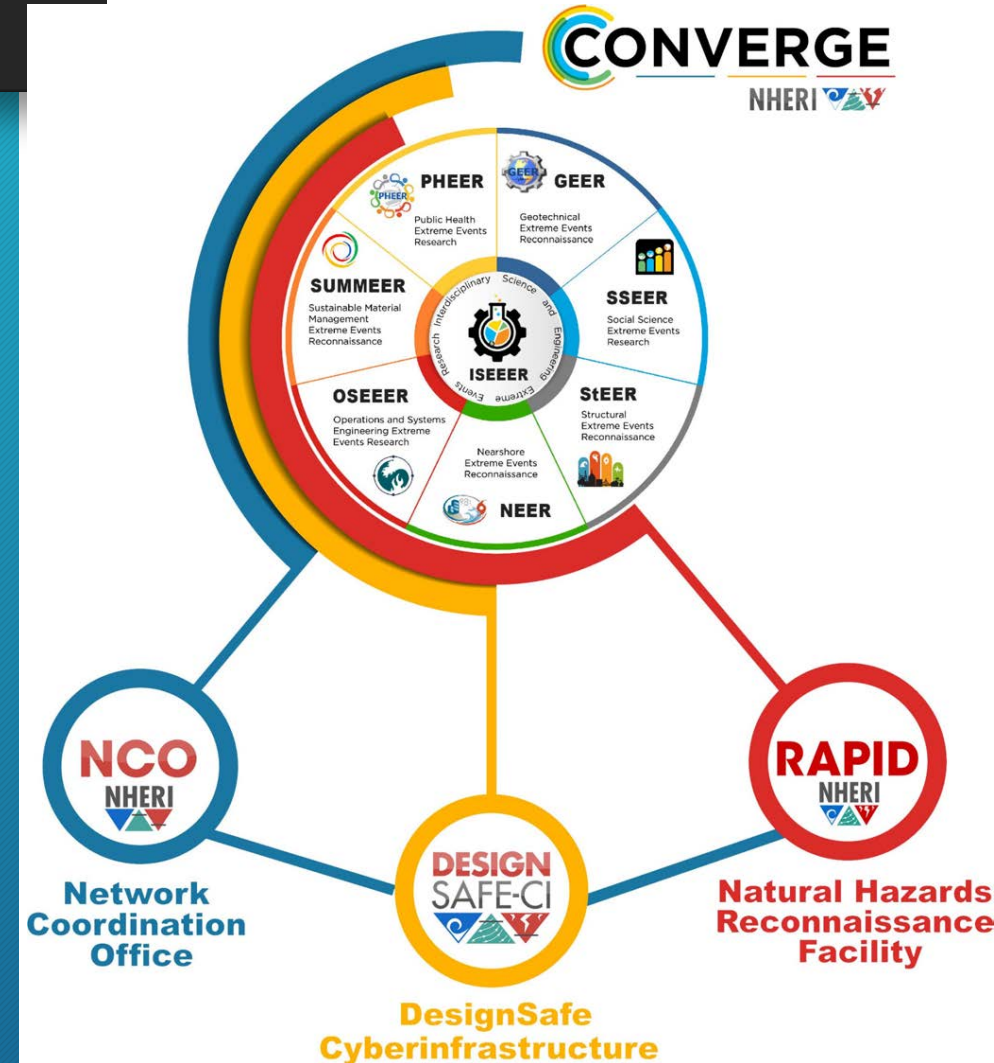
Open Tools and Cyberinfrastructure

Rapid Funding

Communicate, Coordinate, Collaborate

Train

Identify



An Integrated System for Disaster Reconnaissance and Research

Share Data and Results

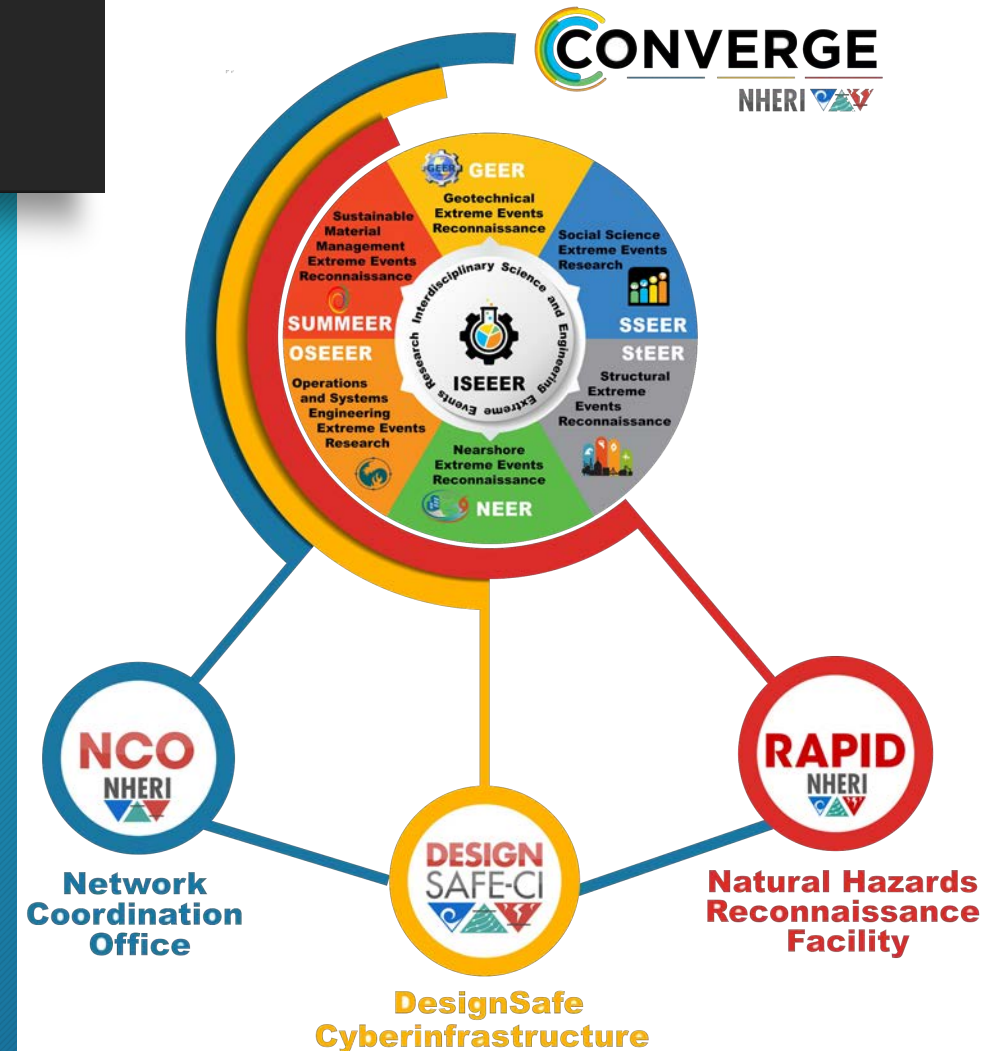
Open Tools and Cyberinfrastructure

Rapid Funding

Communicate, Coordinate, Collaborate

Train

Identify



Principles

- Transparency and Sharing
- Scientific Rigor and Replication
- Ethics
- Diversity, Equity, and Inclusion

Share Data and Results

Open Tools and Cyberinfrastructure

Rapid Funding

Communicate, Coordinate, Collaborate

Train

Identify



**Please sign up for updates and information for the
Natural Hazards Center and CONVERGE:**



hazards.colorado.edu/signup
converge.colorado.edu/signup



CONVERGE and the Natural Hazards Center are funded by the National Science Foundation, Division of Civil, Mechanical, and Manufacturing Innovation (CMMI), Program on Humans, Disasters, and the Built Environment ([Award #1841338](#) and [Award #1635593](#)) with supplemental support from the Centers for Disease Control and Prevention and the U.S. Geological Survey. Any opinions, findings, conclusions, or recommendations expressed in this material are those of the authors and do not necessarily reflect the views of the NSF, CDC, or USGS.