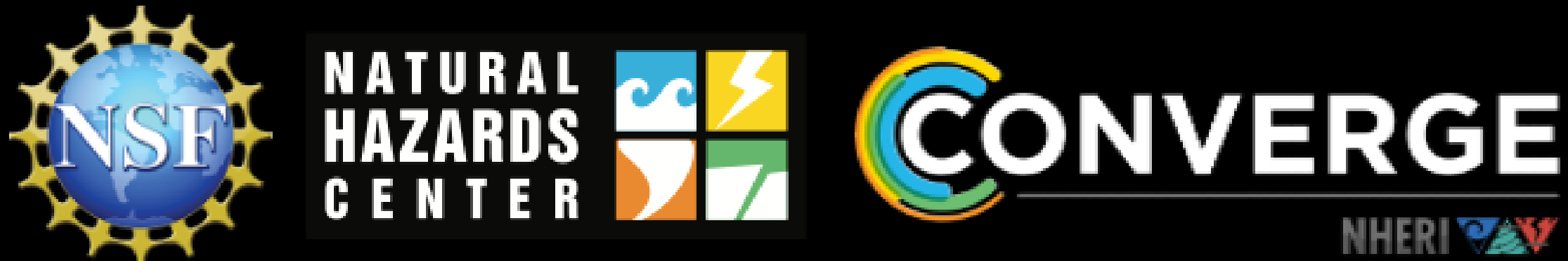


CONVERGE: Social Science, Engineering, and Interdisciplinary Extreme Events Research

Lori Peek, Principal Investigator

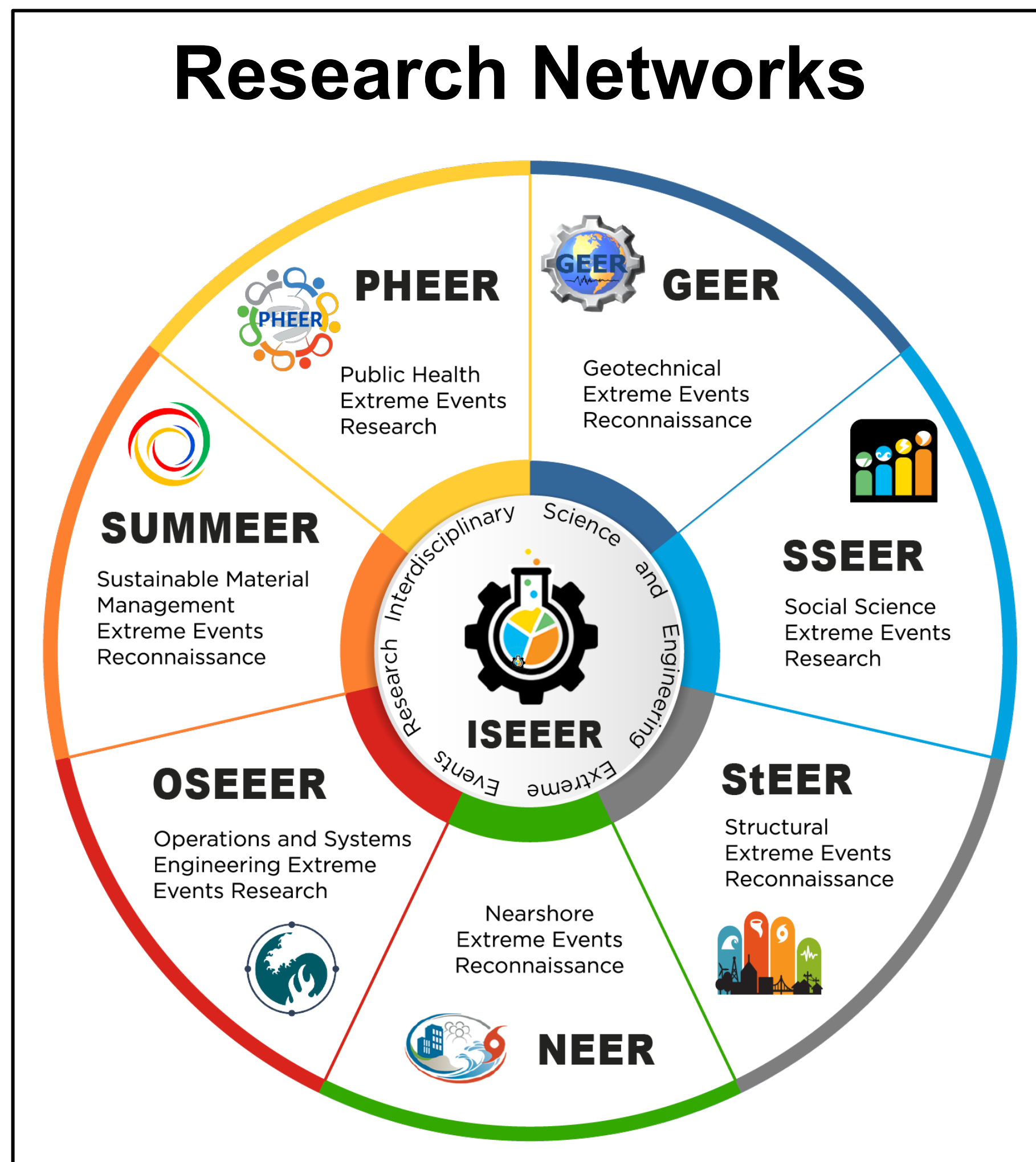
Natural Hazards Center and CONVERGE, University of Colorado Boulder



Award #1841338

Award #1635593

CONVERGE is committed to supporting ethical and rigorous convergence research that seeks to solve pressing social and environmental challenges.



Subscribe to CONVERGE Updates
converge.colorado.edu/signup

Research Networks

Resources

Data

Communications

DATA

Ambassadors
Management
Publication

We coordinate 8 Extreme Events Research / Reconnaissance (EER) networks that bring together natural hazards researchers across disciplinary boundaries.

Our CONVERGE Training Modules, extreme events research check sheets, and other resources accelerate the education and mentoring of a diverse next generation of researchers.

Our Data Ambassadors program trains social science and interdisciplinary researchers to manage, publish, and reuse research protocols, instruments, and data.

We host regular webinars and virtual forums to help educate and connect members of social science, engineering, and interdisciplinary research communities.

CONVERGE Training Modules

Broader Ethical Considerations	Collecting and Sharing Perishable Data	Cultural Competence	Disaster Mental Health
Emotionally Challenging Research	Gender-Based Violence in Fieldwork	Institutional Board Procedures	Public Health Implications
Reciprocity in Research	Social Vulnerability and Disasters	Positionality	Indigenous Sovereignty in Disasters

CONVERGE Resources

Check Sheets
 These short, graphical check sheets are meant to be used as researchers design their studies, prepare to enter the field, conduct field research, and exit the field. The series offers best practices for extreme events research and include check sheets for free to the research community.
[Download Check Sheets](#)

COVID-19 Resources
 Following the onset of the global COVID-19 pandemic, CONVERGE mobilized researchers across the United States and around the world. Learn more about the efforts of the COVID-19 Working Groups and other efforts here.
[View All](#)

Communications

CONVERGE Virtual Forums
 CONVERGE Virtual Forums bring together researchers to communicate, coordinate and collaborate after major events.

CONVERGE Webinar Series
 CONVERGE webinars feature updates regarding new projects and initiatives relevant to various research communities.

CONVERGE Presentations
 Learn about CONVERGE initiatives and research activities through recent presentation slides and videos.

CONVERGE in the News
 CONVERGE initiatives have been featured in news publications locally and nationally.

CONVERGE Team

Lori Peek
 Principal Investigator, CONVERGE, Social Science Extreme Events Research (SSEER) Network, and Interdisciplinary Science and Engineering Extreme Events Research (ISEER) Network
lori.peek@colorado.edu

Rachel Adams
 Research Associate and Lead Training Module Developer, CONVERGE
rachel.adams@colorado.edu

Jennifer Tobin
 Research Associate, CONVERGE, SSEER, and ISEER
jennifer.tobin@colorado.edu

Candace Evans
 Graduate Research Assistant and Co-Lead Training Module Developer, CONVERGE
candace.evans@colorado.edu

Brigid Mark
 Graduate Research Assistant, CONVERGE
Brigid.Mark@colorado.edu

Melissa Villarreal
 Graduate Research Assistant, CONVERGE
melissa.villarreal@colorado.edu

Haoran Wu
 Research Affiliate, CONVERGE
Haoran.wu@colorado.edu

