

Dis/Ability and Disaster Cycles

Annika Doneghy, MPH, MA
BAF Fellow
Case Western Reserve University, PhD
student





What is “disability”?



Disability can be physical, intellectual, invisible, or temporary!
The disability concept is very diverse.



handicap

disability

person

wheelchair

accessibility

medical

mobility

challenged

workplace

impairment

wheel

handicapped

challenge

young

transportation

business

warning

syndrome

professional

assistance

woman

togetherness

sign

invalidity

competitive

physically

transport

support

male

recovery

paraplegic

competition

rehabilitation

help

unable

planning

discomfort

amputation

accident

responsibility

legs

prosthesis

disabled

friendly

disabilities

partner

access

chair

education

incapacity

quadruplegic

parking

safety

determination

coworkers

athlete

injury

elderly

walking

office

stairs

communication

paralympics

friendship

adult

athletics

accessible

dynamic

man

discussion

work

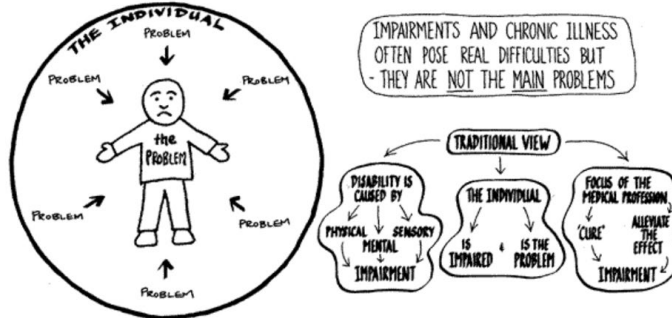
physical

lifestyle

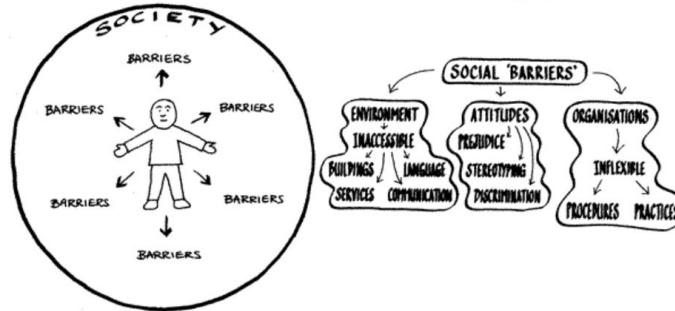
healthcare

people

THE MEDICAL MODEL OF DISABILITY



THE SOCIAL MODEL OF DISABILITY





Her **impairment**
is the problem!
They should
cure her or give
her prosthetics.

The *medical model*
of disability

The **stairs** are
the problem!
They should
build a ramp.

The *social model*
of disability

The Life Cycle of a Disaster

1. Mitigation

Action that will prevent or reduce the impact or consequences of the disaster.

2. Preparedness

Training and process planning for the future disaster event.

DISASTER

4. Recovery

As regular operations begin again, communities also spring into restoration efforts.

3. Response

Safety for individuals and communities as a whole.

Source: FEMA, Emergency Management in the United States



Citylab | Environment

What People With Disabilities Know About Surviving Climate Disasters

Those with disabilities have long been ignored in emergency planning, despite the higher risks they face. Extreme weather is making this gap more deadly.

By Patrick Sisson

June 22, 2023 at 1:40 PM EDT

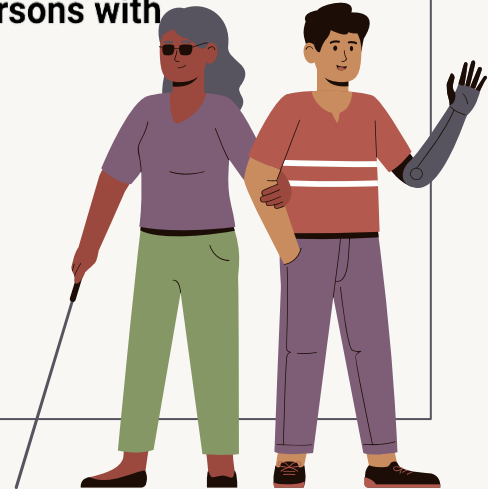


World must act on unacceptable failures to protect persons with disabilities from disasters

Source(s): United Nations Office for Disaster Risk Reduction

Latest Disability Inclusion Study found Low Engagement in Disaster Risk Management and Lack of Access to Information

DECEMBER 7, 2023



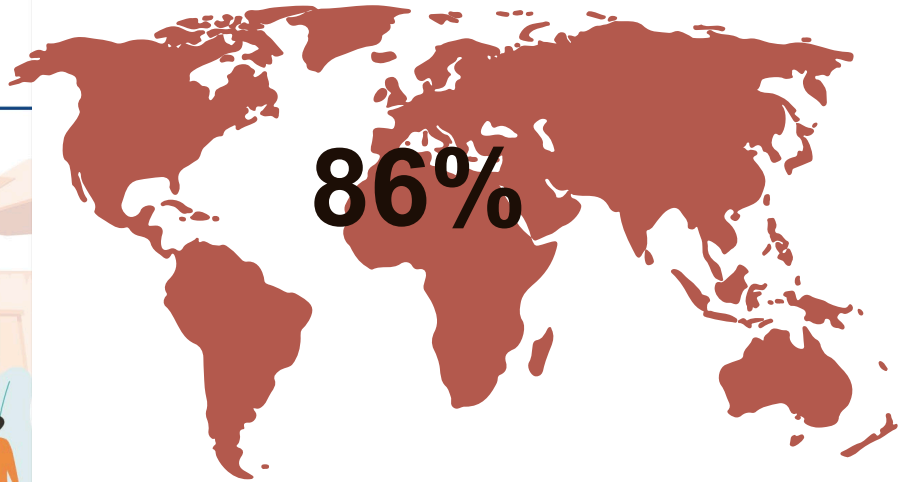
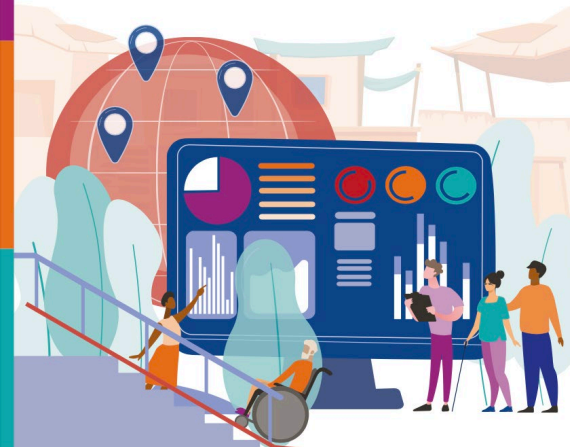


California wildfires

Fleeing the LA fires alone on a wheelchair: 'I had to take my chances'

An evacuation order when the Eaton fire threatened Galen Buckwalter's Sierra Madre home triggered a nightmare odyssey through chaotic streets

2023
GLOBAL SURVEY REPORT
ON PERSONS WITH DISABILITIES
AND DISASTERS





FEMA Whole Community Approach

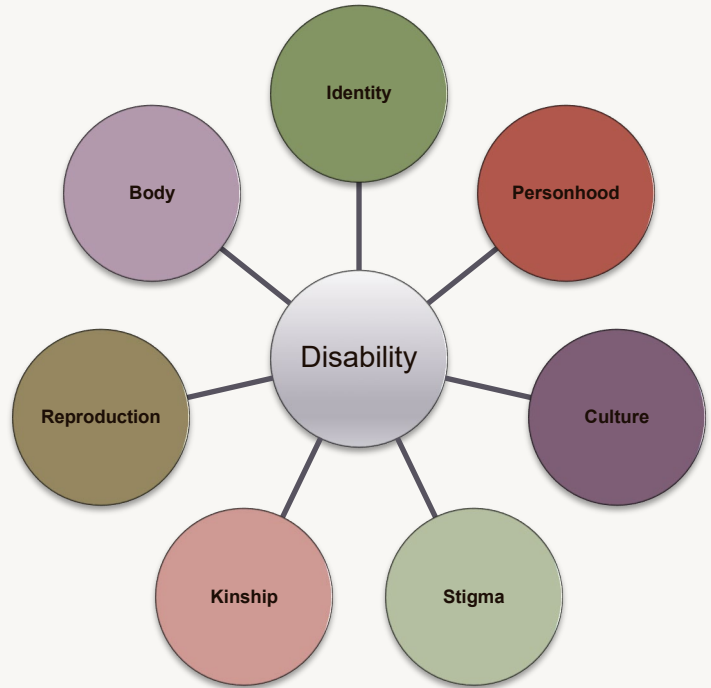
June Kailes “C-MIST” Approach

(Communication, Medical Needs, Maintaining
Independence, Supervision, Transportation)





Anthropology Approach



Proposed Dissertation Research



How disaster shapes perceptions of dis/ability



Differences in perceptions among certain individuals



Implications of differences for understanding disasters and inclusive response



Disasters are often slow events, affecting a community gradually overtime even after the immediate threat has passed. Thus, recovery often becomes chronic and is rarely achieved—especially for people with disabilities and other pre-existing conditions





Policy



Experience

Thank You!

I welcome and appreciate any questions and feedback!

adonegny97@gmail.com



Connect
with me!

