



University of Colorado **Boulder**

CONVERGE Virtual Forum – 2025 Southern California Wildfires, Session 1

Natural Hazards Center and NHERI CONVERGE
University of Colorado Boulder

NSF Award #1635593 and #1841338



CONVERGE Virtual Forum

Purpose of the Virtual Forum Series

- Encourage *communication, coordination, and collaboration* among the research community

converge.colorado.edu/category/virtual-forums/

Purpose of Session 1 Forum

- Share *lessons learned* from previous wildfire investigations
- Hear from *research funders*
- Engage in *resource sharing*

This session is being recorded. The **slides and video recording will be posted on the CONVERGE website.*

converge.colorado.edu/virtual-forums/converge-virtual-forum-2025-southern-california-wildfires-session-1/



Session 2 Forum

- February 5, 2025, 11:00 a.m. to 12:00 p.m. MT
- converge.colorado.edu/virtual-forums/converge-virtual-forum-2025-southern-california-wildfires-session-2/
- Hear from *locally-affected researchers*
- Learn about *launched or planned research*
- Discuss *protocols and research priorities*
 - Safety concerns and research access protocols
 - Ethical and cultural considerations
 - Research priorities for the ethical and rapid collection of perishable data



converge.colorado.edu/category/virtual-forums/

2025 Southern California Wildfires - Research and Resource Coordination

About this Document: The purpose of this document is to provide an outlet for researchers to communicate information regarding studies that have already been launched or are planned in response to the 2025 Southern California Wildfires. This is also a space for researchers and those interested in supporting the research response to share ideas regarding research that is needed as well as information about available data, equipment, resources, and funding opportunities.

1. [Enter a Research Project Already Launched](#)
2. [Enter Details Regarding a Planned Research Study](#)
3. [Have Data, Equipment, Information, or Other Resources To Share? Enter Details Here](#)
4. [Have a Research Question, Idea, or Topic You Want to Promote? Enter It Here](#)
5. [Funding Opportunity? Enter Details Here](#)

Why We Created this Document: Over the past 70 years, disaster research has produced fundamental insights that have reduced harm and suffering and transformed policy, emergency management practice, and building codes and standards. At the same time, [disaster zone research](#) can introduce challenges for busy emergency officials as well as for affected residents. As researchers, we have an ethical imperative to work together to minimize burdens on emergency responders and affected residents while also producing and sharing relevant results. This is an opportunity for our research community - and our partners across the nation and around the world - to come together to ensure *open communication, ethical coordination, and meaningful collaboration* to advance science for society.

Upcoming Events: We hope you will join us for [CONVERGE Virtual Forums focused on the 2025 Southern California Wildfires](#).

Questions: This document was created and is maintained by the director of the [Natural Hazards Center](#) and the NSF-supported [CONVERGE facility](#) at the University of Colorado Boulder. New contributions are entered via the suggesting feature and will be reviewed and approved daily. If you have questions about this document or the upcoming forums, please contact Dr. Lori Peek at Lori.Peek@colorado.edu.

Shared Document

docs.google.com/document/d/1rullriHcQC_rrgNLqrD7UwOOxCJ6adZOScVOztrYJKs/edit?usp=sharing



University of Colorado Boulder

I. Lessons Learned



- **Katie Dickinson**, Colorado School of Public Health
- **Shinwoo Choi**, Texas State University
- **Ratna Dougherty II**, University of Southern Florida and **Kaila Witkowski**, Florida Atlantic University
- **Shirley Feldmann-Jensen**, California State University-Long Beach
- **Erica Fischer**, Oregon State University
- **Tara Goddard**, Texas A&M University



Images Credit: Steven J. Jensen, 2019
hazards.colorado.edu/quick-response-report/resilience-under-fire



II. Research Funding





National Institutes
of Health



NIEHS Resources:

- **NIEHS DR2 contacts (including EHS Network):**
 - **To:** Lydia Louis, Lydia.Louis@nih.gov and Aubrey Miller, Miller.Aubrey@nih.gov
 - **CC:** Dylan Williams, Dylan.Williams@nih.gov
 - **EHS Network Meeting: Thursday 1/23/25 @ 1:00-2:00pm EST**
 - For meeting link please contact: Dylan Williams and CC: Lydia Louis
- **Time-Sensitive Research Opportunities in Environmental Health:**
<https://www.niehs.nih.gov/research/supported/timesensitive>
 - **Upcoming Due Dates:** February 3, 2025 and April 1, 2025
 - <https://grants.nih.gov/grants/guide/rfa-files/RFA-ES-25-003.html>
 - **For all questions contact:** Toccara Chamberlain, Toccara.Chamberlain@nih.gov
 - **Submit letter of intent to (highly encouraged):**
 - **To:** Varsha Shukla, Varsha.Shukla@nih.gov
 - **CC:** Toccara Chamberlain
- **Worker Training Program:** <https://www.niehs.nih.gov/research/supported/translational/wtp>
- **DR2 Resources:** <https://tools.niehs.nih.gov/dr2/>
- **P30 Core Centers:** <https://www.niehs.nih.gov/research/supported/centers/core/grantees>



University of Colorado Boulder

Quick Response Research Award Program



- With funding from the **National Science Foundation**, the Natural Hazards Center established the Quick Response (QR) Research Award Program in **1986**.
- The QR program provides **training** and **funding up to \$5,000** for researchers to **ethically and rapidly collect perishable data** following disasters and other extreme events.
- Learn more about the program, award requirements, and how to submit a proposal at:
hazards.colorado.edu/research/quick-response-program/overview



Images Credit: Erica Fischer et al., 2021
hazards.colorado.edu/quick-response-report/post-wildfire-damage



QR Special Call: Health Outcomes and Climate-Related Disaster Research

hazards.colorado.edu/research/quick-response/special-call/health-outcomes-climate-research

- In 2023 and 2024, the **National Institutes of Health (NIH)** provided supplemental funding to the NSF and Natural Hazards Center for a **Special Call for Health Outcomes and Climate-Related Disaster Research**.
- Available funds support QR awards of **\$10,000 to \$50,000** each.
- Funds must be used to collect **perishable, health-relevant data** focused on **socially marginalized populations**. Events must have occurred **within 6 months or less** of proposal submission.
- Awards to date: hazards.colorado.edu/research/quick-response-report/funded
- At this time, we are **only** accepting proposals for research focused on the **2025 Los Angeles Wildfires**. As noted in the call, we will prioritize proposals that include use of equipment from the Natural Hazards Engineering Research Infrastructure (NHERI) **[RAPID Facility](#)**.
- Proposals must follow all submission guidelines: hazards.colorado.edu/research/quick-response-report/guidelines



Key Deliverable

- Awardees must submit a **20-page, double-spaced report** summarizing research findings and **practical applications** by no later than **six months** following award activation.
- Follow the report submission **guidelines** and **report template** here: hazards.colorado.edu/research/quick-response-report/report-guidelines

hazards.colorado.edu/research/quick-response-report/archives

Special Call for Health Outcomes and Climate-Related Disaster Research

Assessing Health and Environmental Impacts of 2023 Maui Wildfires on Asian Americans

Shinwoo Choi, Texas State University
Yong Je Kim, Lamar University

In August 2023, a catastrophic wildfire engulfed Maui, Hawaii, took 115 lives and destroyed thousands of homes. The aftermath poses significant environmental challenges, including soil contamination and potential health risks. This research focuses on Asian American survivors, the largest ethnic minority in Maui County, investigating their health and mental well-being post-wildfire. It also examines the perspectives of healthcare providers regarding the impact of wildfire on soil contamination and health. Soil samples will be collected to assess contamination risks. The study seeks to illuminate the unique experiences of Asian American communities, contributing to disaster response and environmental conservation.

Transportation as a Social Determinant of Health During Hurricane Idalia

Xiang Yan, University of Florida
Catherine Campbell, University of Florida
Shih-Kai Huang, Jacksonville State University
Xilei Zhao, University of Florida

This project will survey and interview Florida residents to understand the role of transportation as a social determinant of health. Specifically, a survey will be conducted to determine how transportation (e.g., car ownership, disability) constitute a major barrier to access healthcare and food through the state. The research team will also conduct interviews to understand how different populations coped with healthcare/food access during the hurricane and the role of transportation assistance in addressing these needs.

Quick Response Report Submission Guidelines



These guidelines are intended for recipients of the [Quick Response Research Award](#).

Overview

Quick Response Awardees will submit a 20-page (5,000 word) report that will be published on the Natural Hazards Center [Quick Response Reports](#) page. Your report should concisely summarize your research and include an abstract, introduction, literature review, research design, results or findings, discussion, and conclusion.

Report Due Date

The reports for the Quick Response Research Award Program are **due no later than six months following award activation**. Submit your report as a Word document (with photos submitted as separate JPG or PNG files) to the Natural Hazards Center at haz.research.awards@colorado.edu. Please do not submit your report before reading the submission guidelines in full.

Style Guide

Before you start writing, please review our [Natural Hazards Center Publication Style Guide](#). The style guide answers frequently asked questions about our writing style and how to format headings, tables, figures, block quotes, appendices, and more. Reports that do not follow the style guide will be returned to the author for further revision.

Template

Download the Report Template below and save it as a Word document. The template has pre-formatted headings and instructions that will help you create your report. Scroll to the end of the document for a checklist of all our style requirements. Please **review this checklist prior to submitting your final report** to ensure it complies with our guidelines.

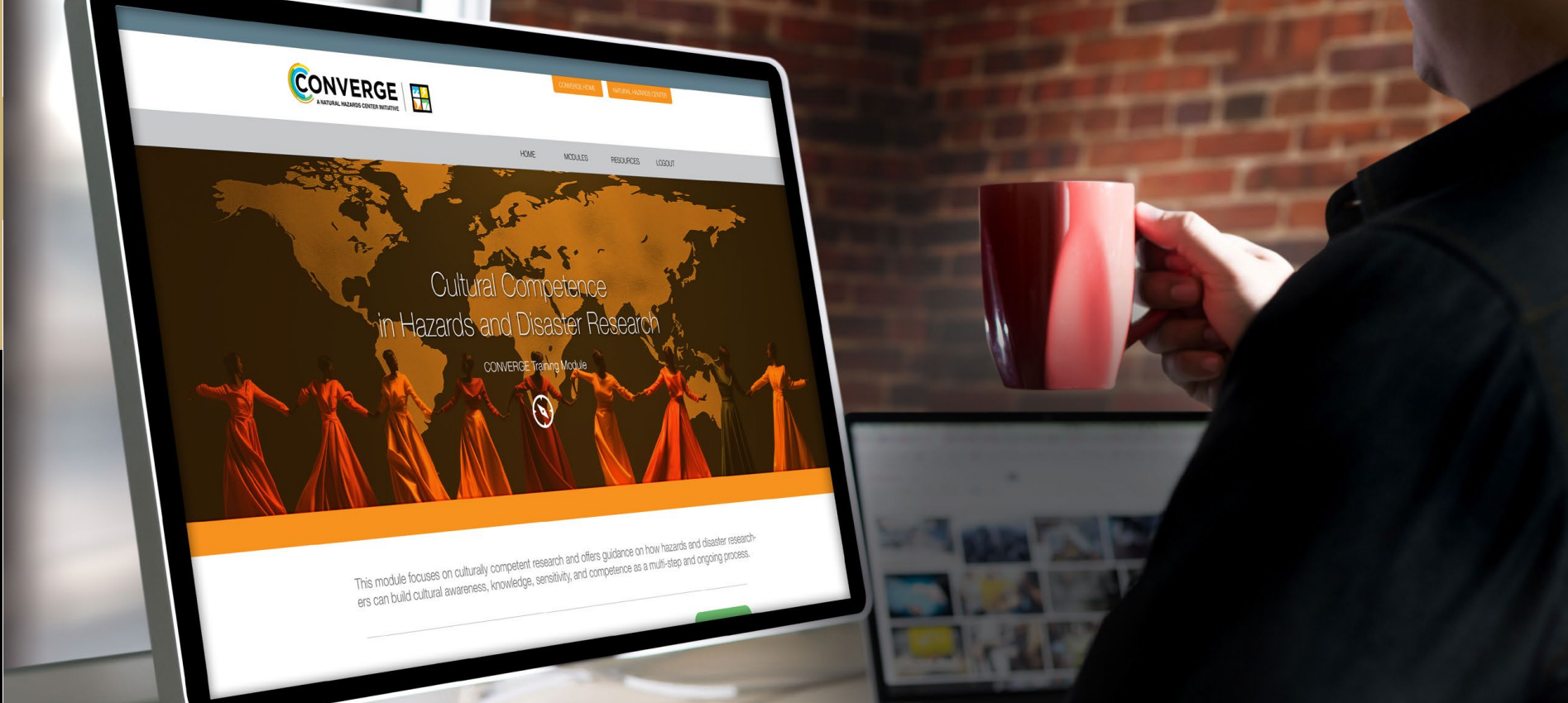
We Can Answer Your Questions!

We are here to support you at every stage of the writing process. Not sure how to format a reference? Torn by word choice, or acceptable acronyms, or any other sort of writing quandary? Please [contact the Natural Hazards Center editing team](#) with any questions.



III. Shared-Use Resources





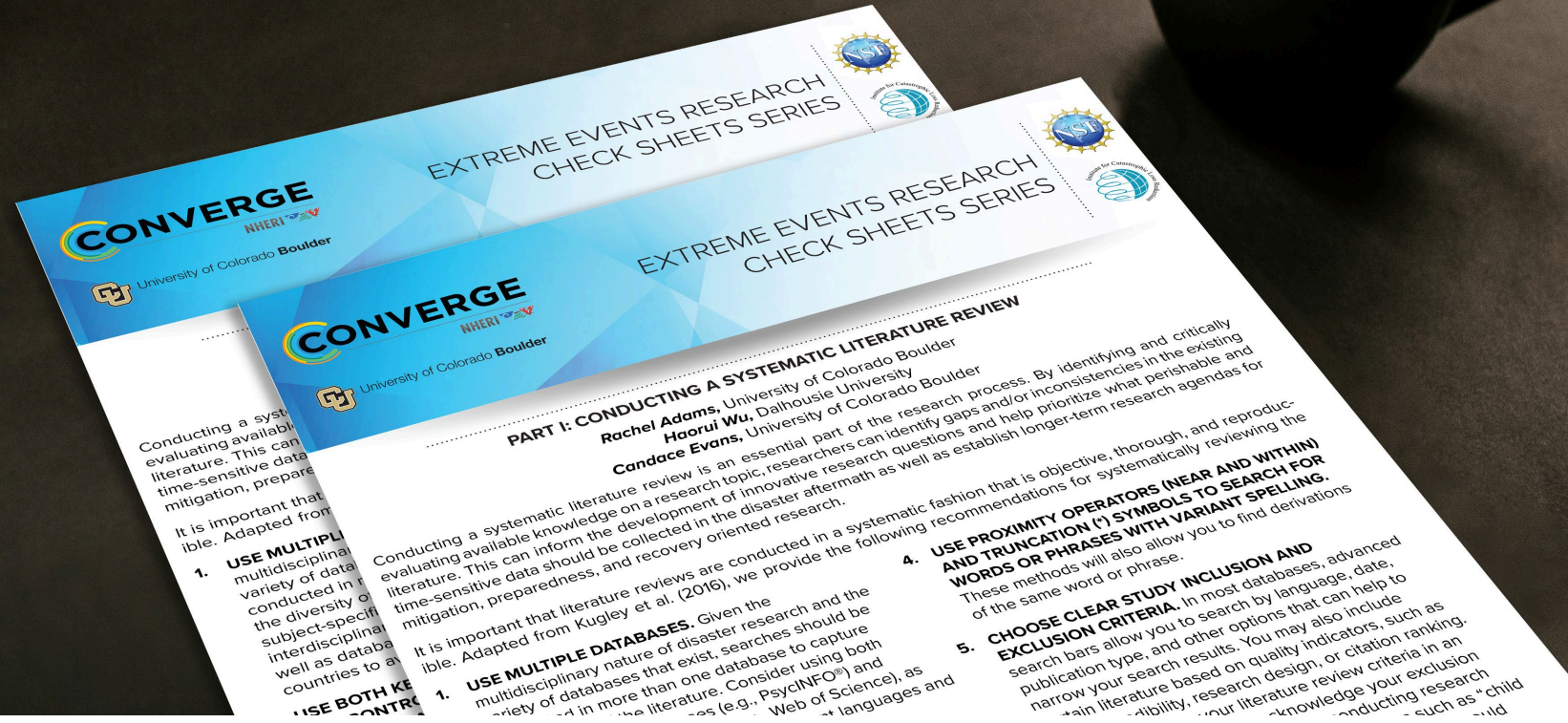
- Broader Ethical Considerations for Hazards and Disaster Researchers
- Collecting and Sharing Perishable Data
- Conducting Emotionally Challenging Research
- Cultural Competence in Hazards and Disaster Research
- Disaster Mental Health
- Indigenous Sovereignty in Disaster Research
- Institutional Review Board (IRB) Procedures and Extreme Events Research
- Positionality in Hazards and Disaster Research and Practice
- Public Health Implications of Hazards and Disaster Research
- Reciprocity in Hazards and Disaster Research
- Social Vulnerability and Disasters
- Understanding and Ending Gender-Based Violence in Fieldwork

CONVERGE Training Modules

converge.colorado.edu/resources/training-modules/



CONVERGE Extreme Events Research Check Sheets Series



converge.colorado.edu/resources/check-sheets/



Defining, collecting, and sharing perishable disaster data

Rachel M. Adams Research Associate, Natural Hazards Center, University of Colorado Boulder, United States, **Candace M. Evans** Doctoral Candidate, Department of Sociology, and Graduate Research Assistant, Natural Hazards Center, University of Colorado Boulder, United States, and **Lori Peek** Professor, Department of Sociology, and Director, Natural Hazards Center, University of Colorado Boulder, United States

Researchers across disciplines have long sought to collect 'perishable data' in the context of disasters. Yet, this data type is neither consistently defined nor discussed in specific detail in the literature. To address this gap, this paper defines perishable data and provides guidance on ways to improve both how it is collected and shared. Here, perishable data is conceptualised as highly transient data that may degrade in quality, be irrevocably altered, or be permanently lost if not gathered soon after it is generated. Perishable data may include ephemeral information that must be collected to characterise pre-existing hazardous conditions, near-miss events, actual disasters, and longer-term recovery processes. This data may need to be gathered at multiple points in time across varying geographic scales to accurately characterise exposure, susceptibility to harm, or coping capacity. The paper considers ethical and logistical challenges and discusses opportunities to advance equitable perishable data collection and dissemination.

Keywords: data collection, data publication, perishable data, quick response, reconnaissance, research ethics, research coordination

Introduction

The rapid collection of data immediately prior to, during, and in the direct aftermath of a disaster is a cornerstone of the multidisciplinary field of hazards and disaster studies (Tierney, 2019). Yet, to date, very little has been written about what is often referred to as 'perishable data', including what distinguishes it and what challenges are associated with its collection and dissemination.

Considering this gap in the literature, the goal of this paper is twofold: (i) to clarify the attributes of perishable data; and (ii) to offer recommendations to improve how it is collected and shared. We begin with an overview of how the collection of perishable data has been approached in the hazards and disaster field by both researchers and funders. We then review available literature to synthesise and advance a definition that encompasses the distinctive qualities of perishable data. In our search for available definitions of perishable data, we reviewed relevant peer reviewed and grey literature from the past 50 years and read more than 300 reports of studies funded through the Natural Hazards

© 2023 The Authors. Disasters published by John Wiley & Sons Ltd on behalf of ODI. This is an open access article under the terms of the Creative Commons Attribution NonCommercial License, which permits use, distribution and reproduction in any medium, provided the original work is properly cited and is not used for commercial purposes.

A Resource for Those Planning to Collect Perishable Data

Adams, R. M., C. M. Evans, and L. Peek. (2023). "Defining, Collecting, and Sharing Perishable Disaster Data." *Disasters* 48(1): e12592.

<https://doi.org/10.1111/disa.12592>

Other publications from CONVERGE researchers available at:
converge.colorado.edu/category/publications/



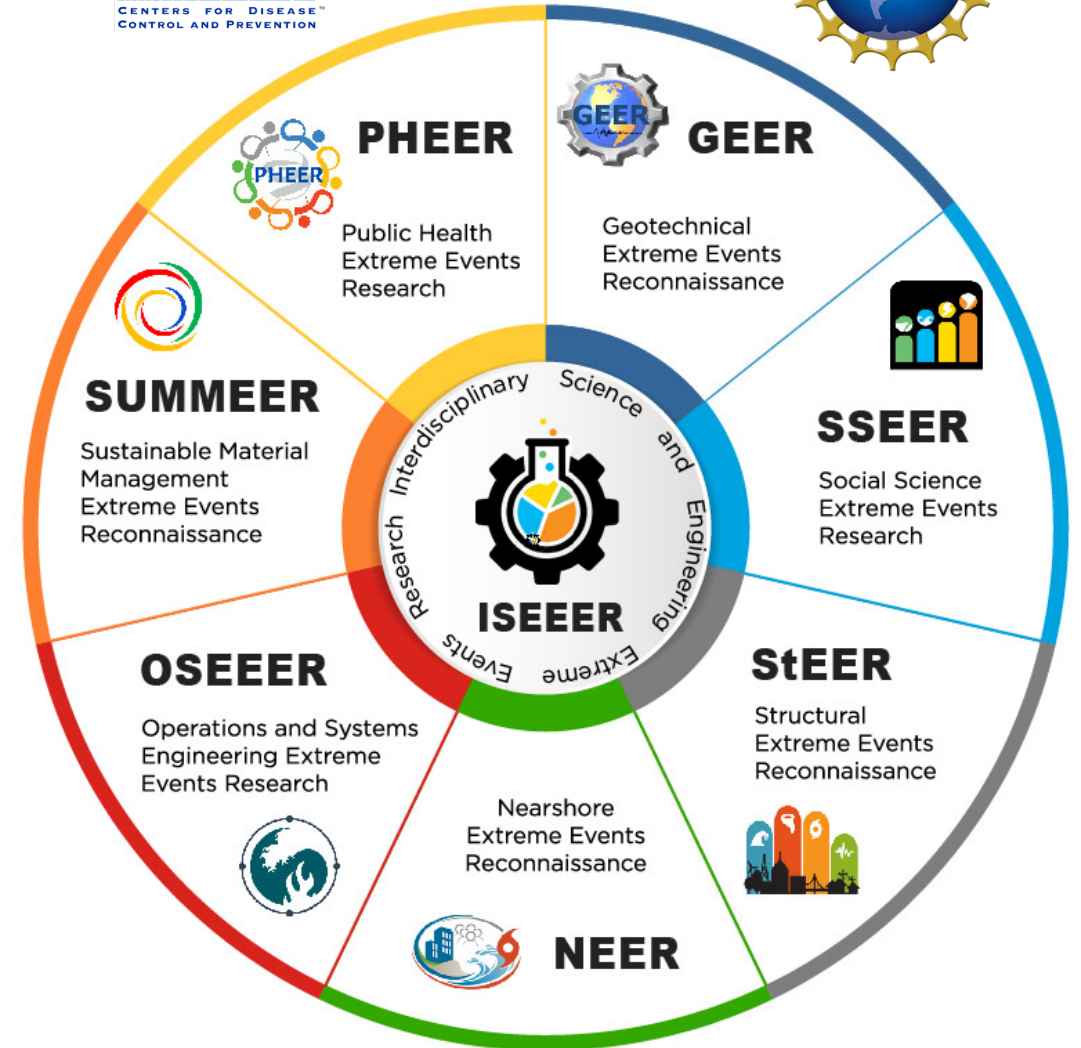
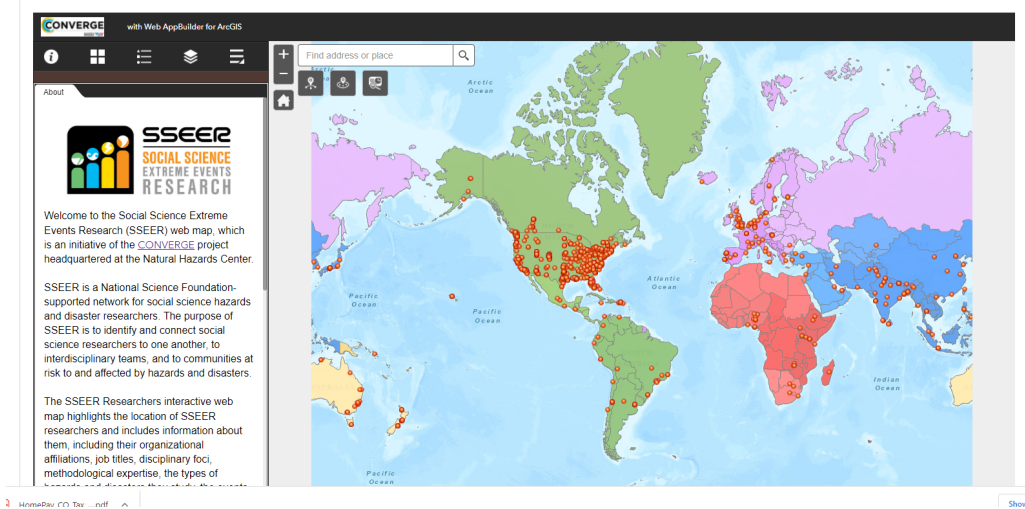
University of Colorado Boulder

CONVERGE Virtual Forum

Reconnaissance and Research Coordination Networks

Social Science Extreme Events Research (SSEER)

converge.colorado.edu/research-networks/sseer/



converge.colorado.edu/research-networks/



SSEER is a
 NSF-supported **global network of social scientists** who study hazards and disasters. SSEER **identifies** researchers to develop the social science workforce and **coordinates** social science research teams in large-scale disasters to **advance scholarship** on the root causes and human consequences of extreme events.



1,757 SOCIAL SCIENTISTS
 HAVE JOINED SINCE 2018

converge.colorado.edu/research-networks/sseer/

Wildfire-Focused Publications

This page contains dozens of Natural Hazards Center-supported publications focused on preparedness, response, and recovery from wildfires.

hazards.colorado.edu/resources/wildfires

The screenshot shows the website's navigation bar with the logo and menu items: ABOUT US, PUBLICATIONS, TRAINING, WORKSHOP, AWARD PROGRAMS, RESEARCH, and RESOURCES. The main content area is titled "Wildfire Publications" and includes a sidebar with links to "Quick Response Reports", "Weather Ready Report", "Public Health Report", "Mitigation Matters Reports", "Research Counts Articles", and "Directors Corner Article". The main text describes the page's purpose and lists two award programs: "Quick Response Research Award Program" (with examples QR363 and QR361) and "Special Call for Research: FEMA Region 8".



University of Colorado Boulder

CONVERGE Virtual Forum



NSF NHERI 
RAPID



NSF NHERI 
DESIGN SAFE





Open Discussion and Resource Sharing



THANK YOU



Questions? Contact:
Lori Peek, Ph.D.
Lori.Peek@colorado.edu

hazards.colorado.edu
converge.colorado.edu

Subscribe Now

