



University of Colorado **Boulder**

CONVERGE Virtual Forum – 2025 Southern California Wildfires, Session 2

Natural Hazards Center and NHERI CONVERGE
University of Colorado Boulder

converge.colorado.edu/virtual-forums/converge-virtual-forum-2025-southern-california-wildfires-session-2/



NSF Award #1635593 and #1841338



CONVERGE Virtual Forum

Purpose of the Virtual Forum Series

- Encourage *communication, coordination, and collaboration* among the research community

converge.colorado.edu/category/virtual-forums/



2025 Southern California Wildfires - Research and Resource Coordination

About this Document: The purpose of this document is to provide an outlet for researchers to communicate information regarding studies that have already been launched or are planned in response to the 2025 Southern California Wildfires. This is also a space for researchers and those interested in supporting the research response to share ideas regarding research that is needed as well as information about available data, equipment, resources, and funding opportunities.

1. [Enter a Research Project Already Launched](#)
2. [Enter Details Regarding a Planned Research Study](#)
3. [Have Data, Equipment, Information, or Other Resources To Share? Enter Details Here](#)
4. [Have a Research Question, Idea, or Topic You Want to Promote? Enter It Here](#)
5. [Funding Opportunity? Enter Details Here](#)

Why We Created this Document: Over the past 70 years, disaster research has produced fundamental insights that have reduced harm and suffering and transformed policy, emergency management practice, and building codes and standards. At the same time, [disaster zone research](#) can introduce challenges for busy emergency officials as well as for affected residents. As researchers, we have an ethical imperative to work together to minimize burdens on emergency responders and affected residents while also producing and sharing relevant results. This is an opportunity for our research community - and our partners across the nation and around the world - to come together to ensure *open communication*, *ethical coordination*, and *meaningful collaboration* to advance science for society.

Upcoming Events: We hope you will join us for [CONVERGE Virtual Forums focused on the 2025 Southern California Wildfires](#).

Questions: This document was created and is maintained by the director of the [Natural Hazards Center](#) and the NSF-supported [CONVERGE facility](#) at the University of Colorado Boulder. New contributions are entered via the suggesting feature and will be reviewed and approved daily. If you have questions about this document or the upcoming forums, please contact Dr. Lori Peek at Lori.Peek@colorado.edu.

Shared Document

docs.google.com/document/d/1rullriHcQC_rrgNLqrD7UwOOxCJ6adZOScVOztrYJKs/edit?usp=sharing



University of Colorado Boulder

Agenda: Session 2 Forum

- Hear from *research coordination networks*
- Learn about NSF-funded *shared-use resources*
- Hear from those *who have launched, or plan to launch, research studies*
- Discuss *research protocols and priorities*

This session is being recorded. The **slides and video recording will be posted on the CONVERGE website.*

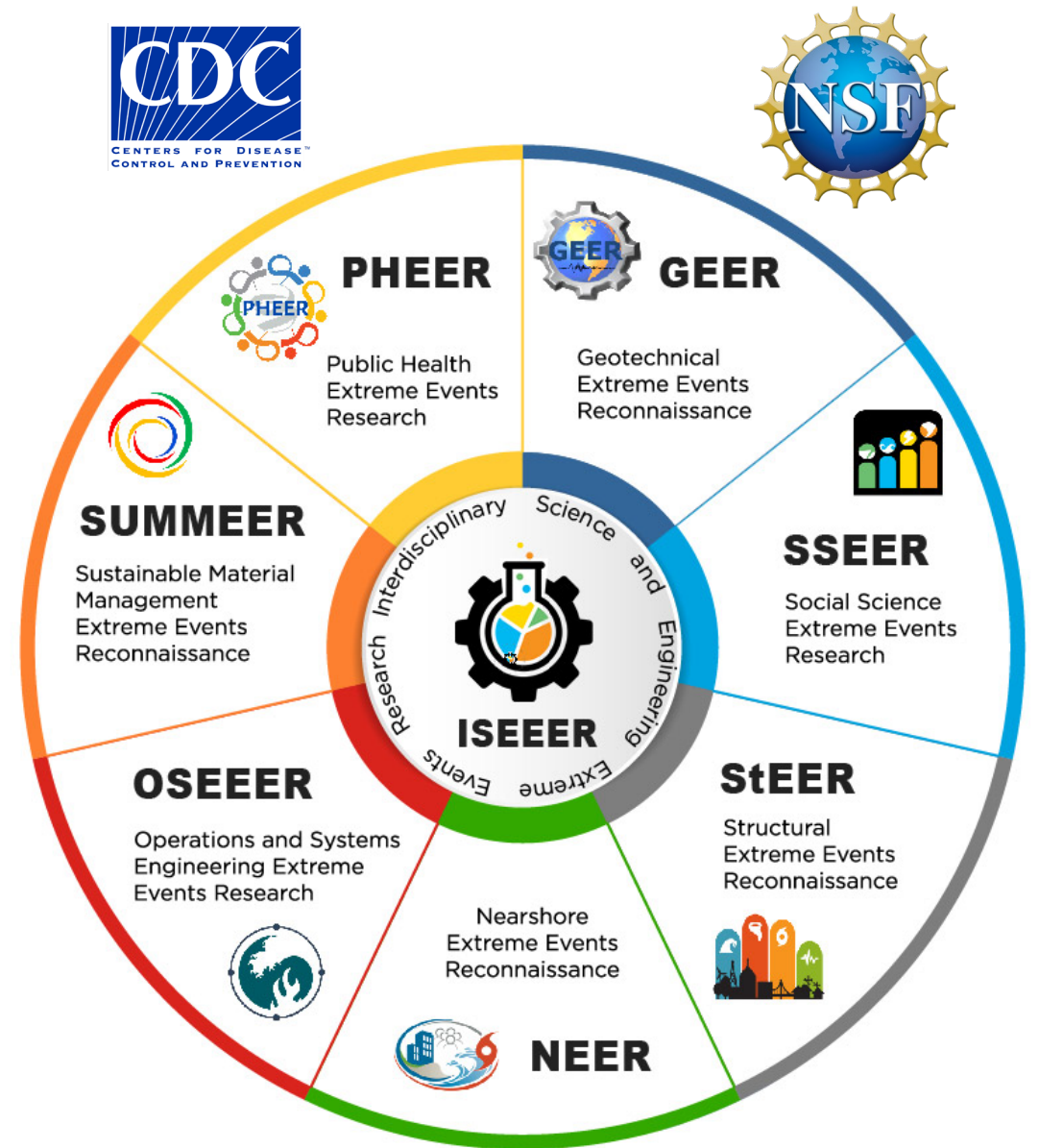
converge.colorado.edu/virtual-forums/converge-virtual-forum-2025-southern-california-wildfires-session-2/



I. Research Coordination Networks



Extreme Events Reconnaissance and Research Coordination Networks



converge.colorado.edu/research-networks/

II. Shared-Use Resources



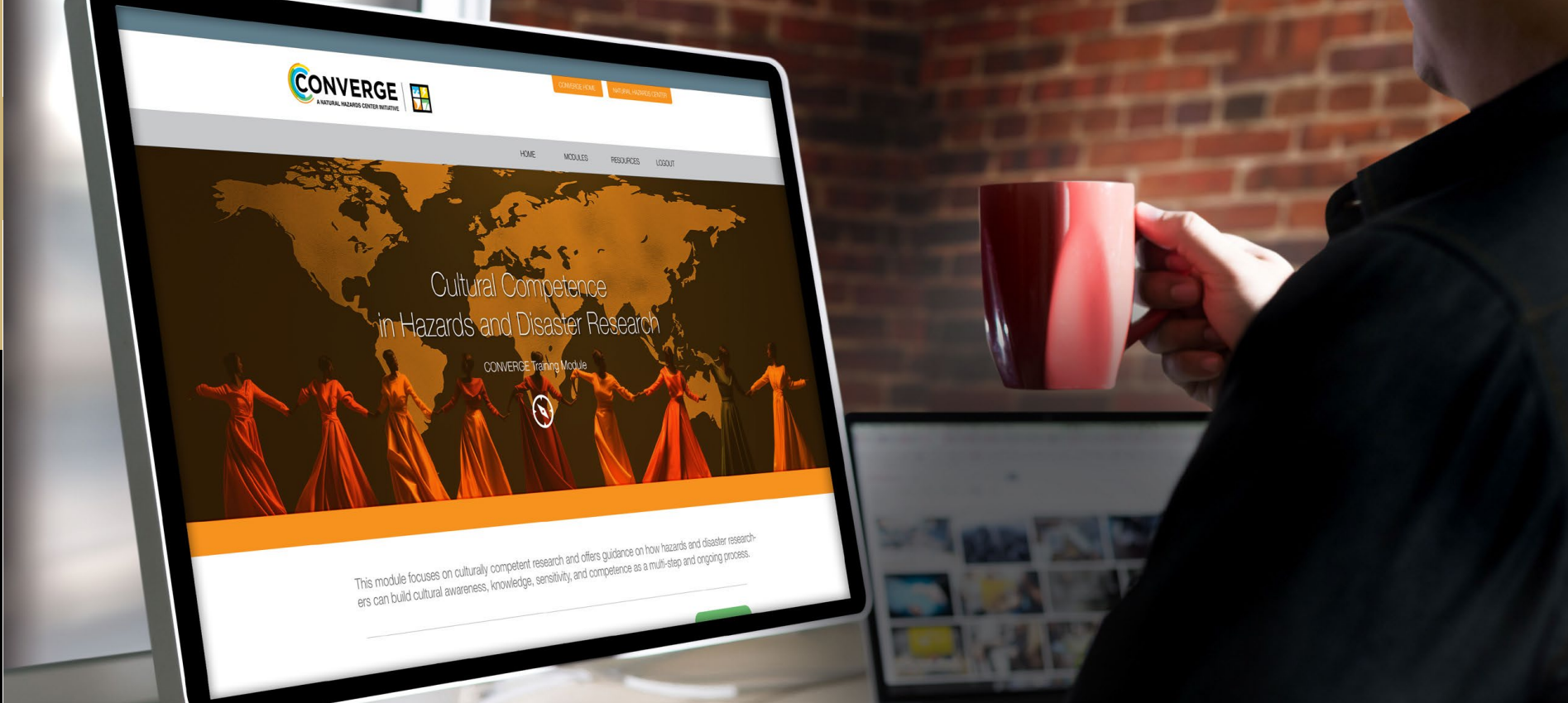


NSF NHERI 
RAPID



NSF NHERI 
DESIGN SAFE





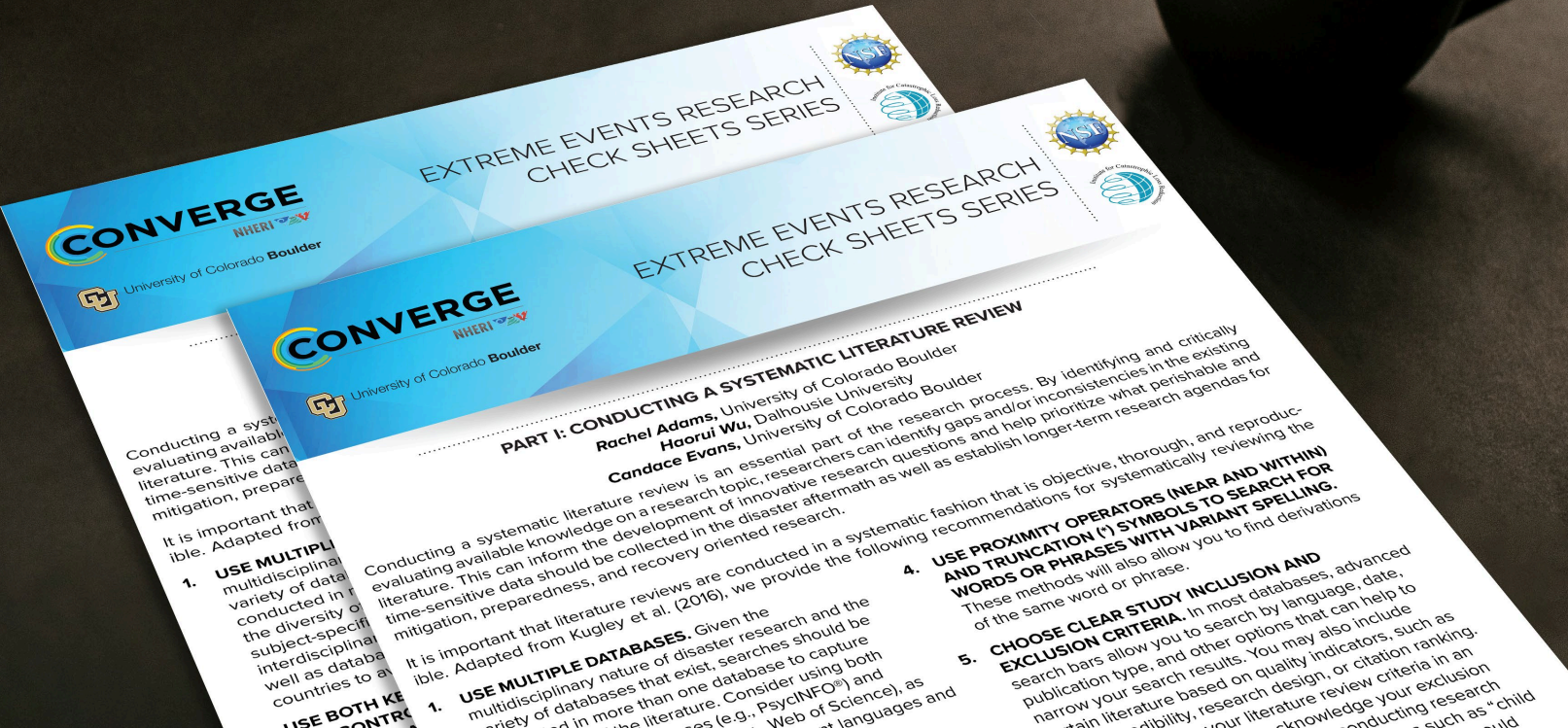
- Broader Ethical Considerations for Hazards and Disaster Researchers
- Collecting and Sharing Perishable Data
- Conducting Emotionally Challenging Research
- Cultural Competence in Hazards and Disaster Research
- Disaster Mental Health
- Indigenous Sovereignty in Disaster Research
- Institutional Review Board (IRB) Procedures and Extreme Events Research
- Positionality in Hazards and Disaster Research and Practice
- Public Health Implications of Hazards and Disaster Research
- Reciprocity in Hazards and Disaster Research
- Social Vulnerability and Disasters
- Understanding and Ending Gender-Based Violence in Fieldwork

CONVERGE Training Modules

converge.colorado.edu/resources/training-modules/



CONVERGE Extreme Events Research Check Sheets Series



converge.colorado.edu/resources/check-sheets/

Defining, collecting, and sharing perishable disaster data

Rachel M. Adams Research Associate, Natural Hazards Center, University of Colorado Boulder, United States, **Candace M. Evans** Doctoral Candidate, Department of Sociology, and Graduate Research Assistant, Natural Hazards Center, University of Colorado Boulder, United States, and **Lori Peek** Professor, Department of Sociology, and Director, Natural Hazards Center, University of Colorado Boulder, United States

Researchers across disciplines have long sought to collect 'perishable data' in the context of disasters. Yet, this data type is neither consistently defined nor discussed in specific detail in the literature. To address this gap, this paper defines perishable data and provides guidance on ways to improve both how it is collected and shared. Here, perishable data is conceptualised as highly transient data that may degrade in quality, be irrevocably altered, or be permanently lost if not gathered soon after it is generated. Perishable data may include ephemeral information that must be collected to characterise pre-existing hazardous conditions, near-miss events, actual disasters, and longer-term recovery processes. This data may need to be gathered at multiple points in time across varying geographic scales to accurately characterise exposure, susceptibility to harm, or coping capacity. The paper considers ethical and logistical challenges and discusses opportunities to advance equitable perishable data collection and dissemination.

Keywords: data collection, data publication, perishable data, quick response, reconnaissance, research ethics, research coordination

Introduction

The rapid collection of data immediately prior to, during, and in the direct aftermath of a disaster is a cornerstone of the multidisciplinary field of hazards and disaster studies (Tierney, 2019). Yet, to date, very little has been written about what is often referred to as 'perishable data', including what distinguishes it and what challenges are associated with its collection and dissemination.

Considering this gap in the literature, the goal of this paper is twofold: (i) to clarify the attributes of perishable data; and (ii) to offer recommendations to improve how it is collected and shared. We begin with an overview of how the collection of perishable data has been approached in the hazards and disaster field by both researchers and funders. We then review available literature to synthesise and advance a definition that encompasses the distinctive qualities of perishable data. In our search for available definitions of perishable data, we reviewed relevant peer reviewed and grey literature from the past 50 years and read more than 300 reports of studies funded through the Natural Hazards

© 2023 The Authors. Disasters published by John Wiley & Sons Ltd on behalf of ODI. This is an open access article under the terms of the Creative Commons Attribution NonCommercial License, which permits use, distribution and reproduction in any medium, provided the original work is properly cited and is not used for commercial purposes.

A Resource for Those Planning to Collect Perishable Data

Adams, R. M., C. M. Evans, and L. Peek. (2023). "Defining, Collecting, and Sharing Perishable Disaster Data." *Disasters* 48(1): e12592.

<https://doi.org/10.1111/disa.12592>

Other publications from CONVERGE researchers available at:
converge.colorado.edu/category/publications/



University of Colorado Boulder

CONVERGE Virtual Forum

III. Launched, Funded, and Planned Studies



IV. Lessons from Maui Wildfire Exposure Study





Open Discussion and Resource Sharing



THANK YOU



Questions? Contact:
Lori Peek, Ph.D.
Lori.PEEK@colorado.edu

hazards.colorado.edu
converge.colorado.edu

Subscribe Now

