



University of Hawai'i

Hawai'i
Integrated
Analytics



UHERO

THE ECONOMIC RESEARCH ORGANIZATION
AT THE UNIVERSITY OF HAWAII

Maui Wildfire Exposure Study

Ruben Juarez
HMSA Professor in Health Economics
College of Social Sciences
UHERO &
Dept. of Economics

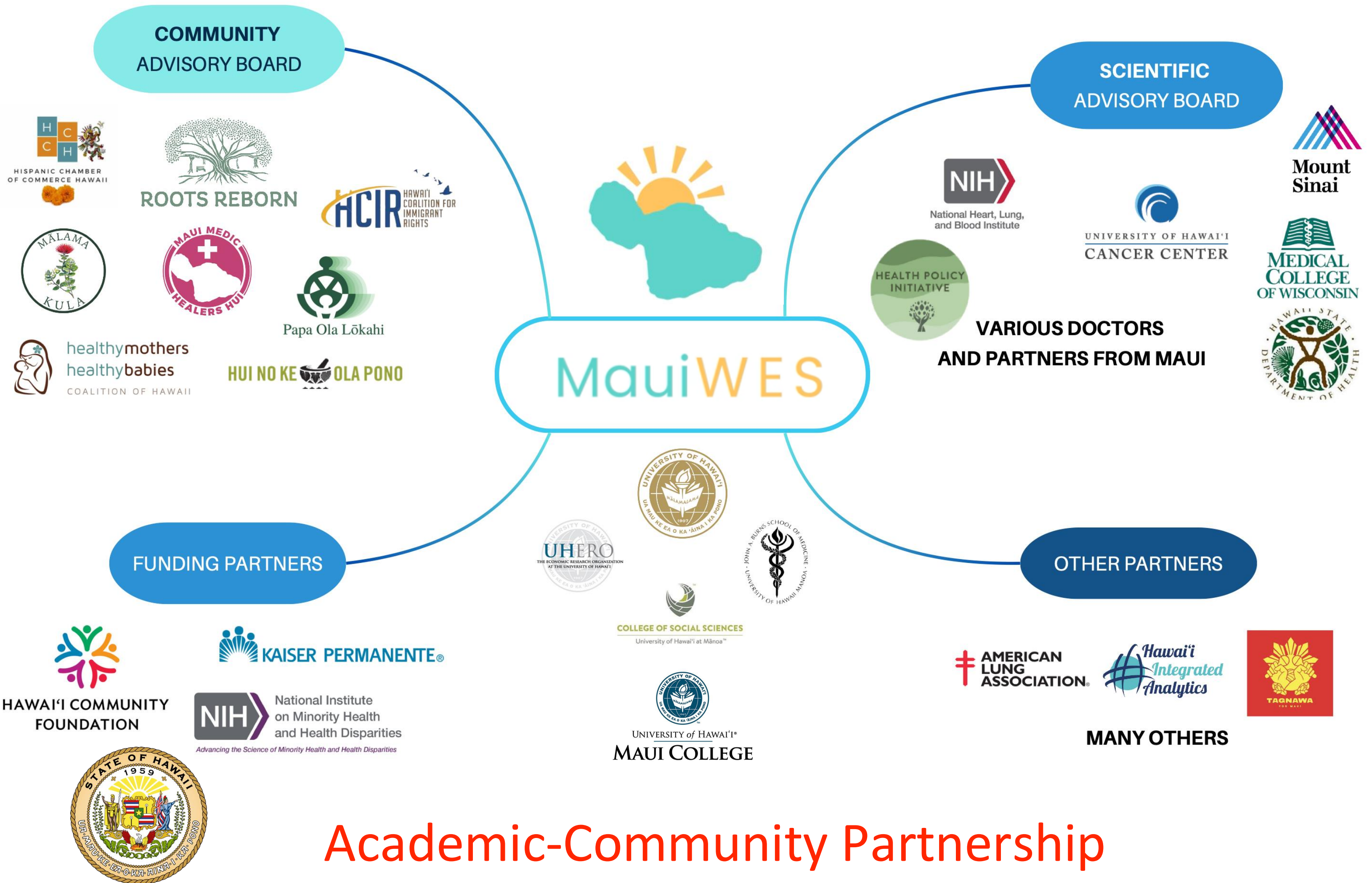
Alika Maunakea
Professor & Director
Epigenomics Research Program
John A. Burns School of Medicine
Dept. of Anatomy, Biochemistry &
Physiology



MauiWES.org

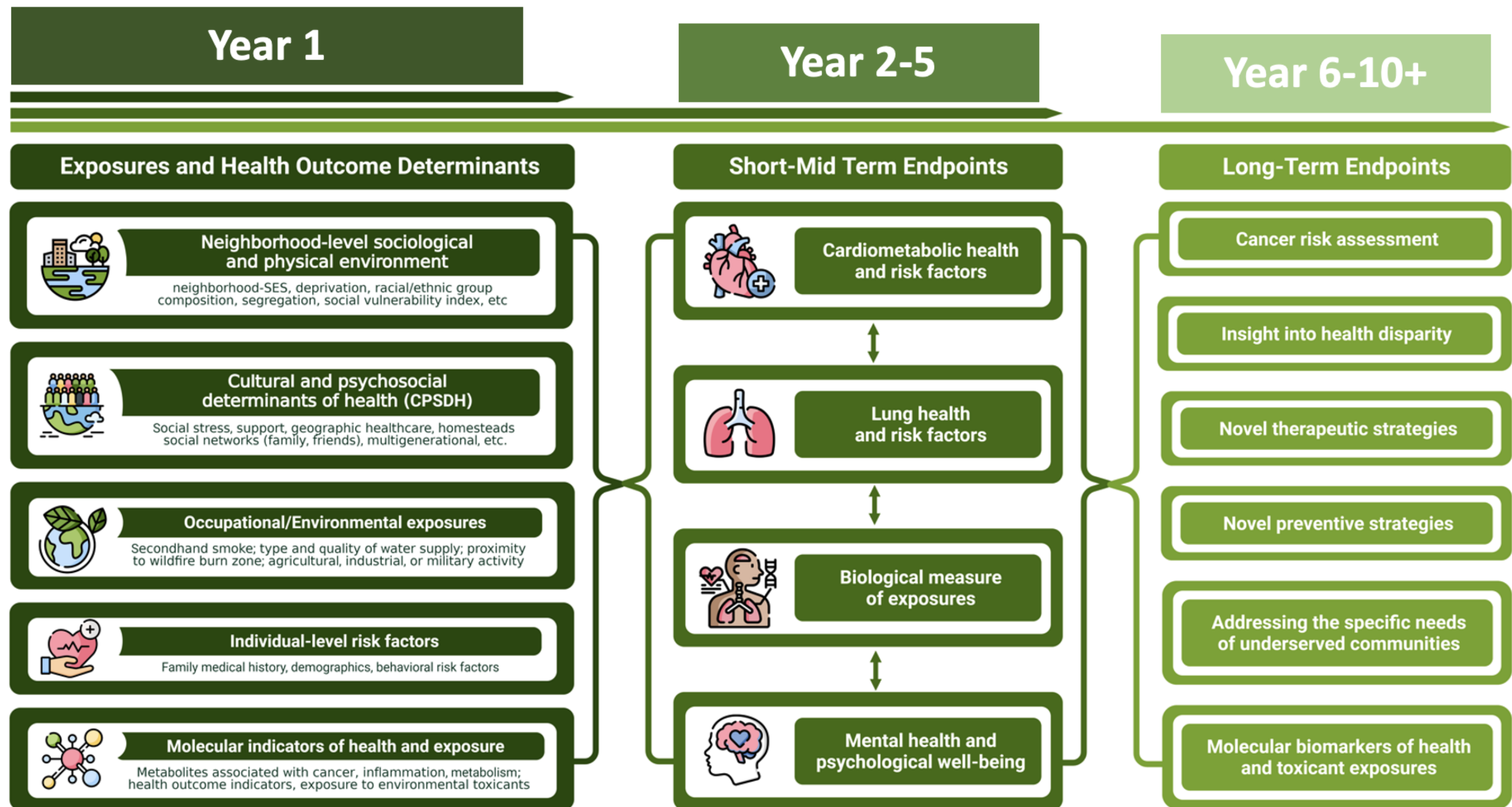
NIH R61MD019793

Maui Wildfire Exposure Study (MauiWES) - Team



Academic-Community Partnership

MauiWES - Goals and Timeline



Objective: Establish a cohort of ~2,000 individuals impacted by the wildfires to better understand and address short- and long-term health outcomes.

Launch: Data gathering started on January 26, 2024...

Survey, Biomonitoring, and Health Screening

Data Components

Questionnaires

- Demographics
- Housing Stability
- Food Security
- Employment
- Exposure
- Resiliency
- Social Support
- Health Behaviors
- Perceived Trust
- *Etc...*

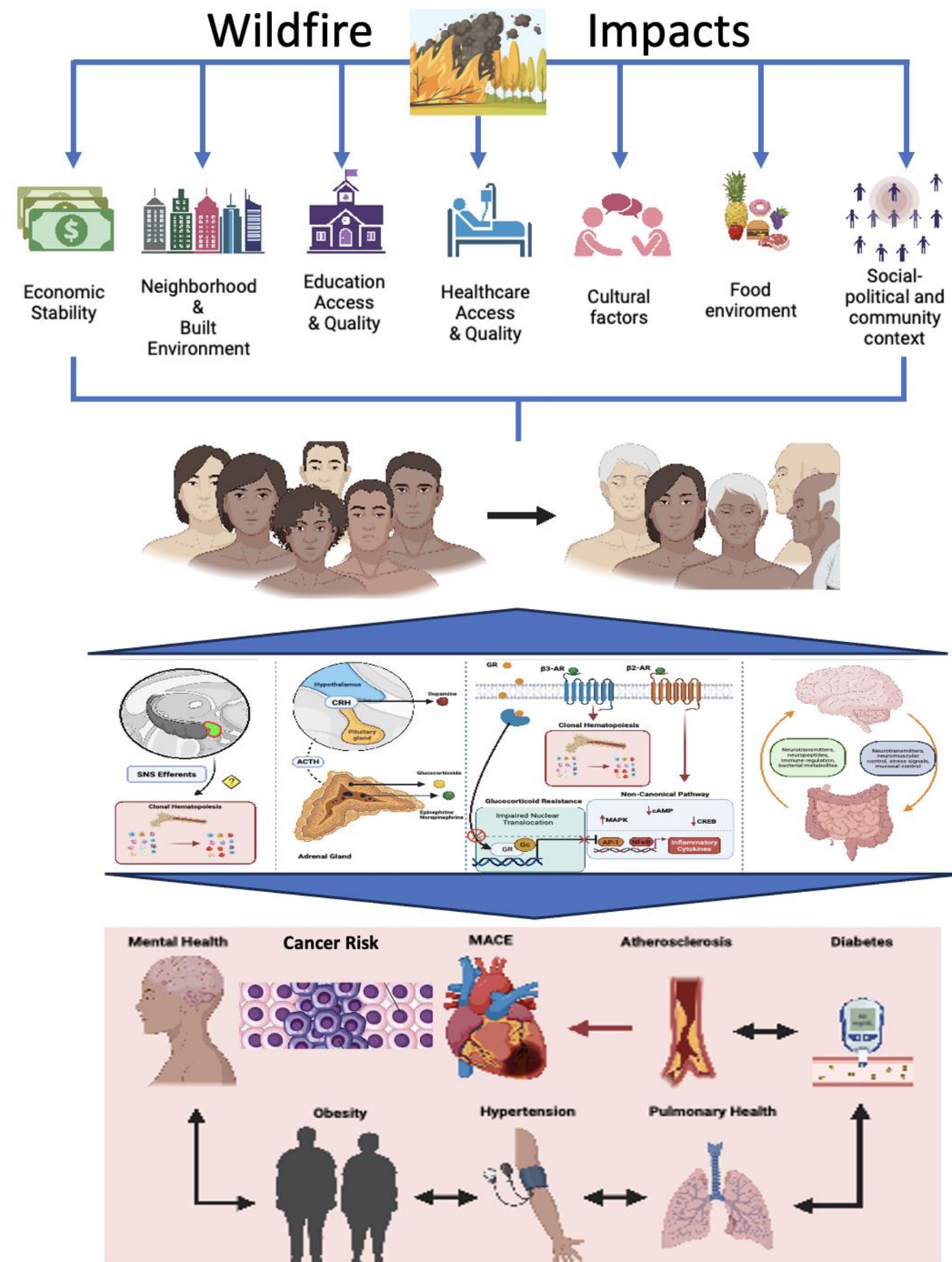
Biospecimens

- Stress Response
- Inflammation
- Environmental Toxicants

Health Exam

- Lung Health
- Cardiovascular Health
- Metabolic Health
- Mental Health
- Cancer Risk (EMR)

Participant Involvement



Enrolled: 1945+ (~ 39 recruitment days); first health screen since the fires for many.

MauiWES Main Findings So Far

Main trends detailed in the report:

1. Mental and physical health issues
2. Access to care
3. Housing, job, and food insecurity



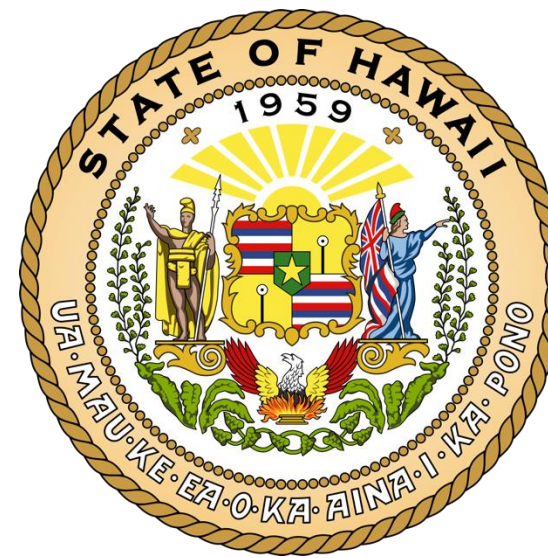
PUBLIC HEALTH REPORT
**MAUI WILDFIRE EXPOSURE
STUDY: COMMUNITY HEALTH,
WELLBEING, AND RESILIENCE**
MAY 15, 2024



Where we are now: Finalizing health screenings for 2000+ participants



Mahalo to Our Partners and Funders



COLLEGE OF SOCIAL SCIENCES
University of Hawai'i at Mānoa™

NIH R61MD019793

UHERO